



GALLIONS POINT

AT ROYAL ALBERT WHARF | E16



FLOORPLANS

GALLEY HOUSE
TILLER HOUSE

There's a vibrant new community in the East – and at its heart is the Royal Docks. Gallions Point is a contemporary neighbourhood of 127 homes located within easy reach of Canary Wharf, ABP Royal Albert Docks, the University of East London, ExCeL London, the O₂ and just 7 minutes to future Crossrail at Custom House.

LONDON IS MOVING EAST

SHAPED BY TELFORD HOMES
AND NOTTING HILL GENESIS



LOOKING TO THE EAST

Thanks to a multi-million pound regeneration programme, the Royal Docks is set to become a magnet for cutting-edge businesses and cosmopolitan homeowners.

TO THE NEW LONDON

The Royal Group of Docks
London's newest district

The Royal Docks once attracted trade and visitors from across the world – and thanks to a multi-million pound regeneration programme over the next five years, it is set to become a global destination once again. Spanning over 275 acres by the River Thames, this is a cosmopolitan district that will soon be brought even closer to central London – thanks to the new Crossrail link at Custom House Station anticipated to open late 2020 - early 2021.



WELCOME TO GALLIONS POINT

AT ROYAL ALBERT WHARF

Welcome to Gallions Point at Royal Albert Wharf, a new and exclusive collection of luxury 1, 2 and 3 bedroom homes in London's exciting new neighbourhood, the Royal Docks.

Inside you'll discover interior spaces that cater to the modern, fast-paced lifestyle, each finished with a contemporary specification to offer both style and practicality. This elevated living combined with links to the capital allows you to lead life on your terms.

Start your adventure at Gallions Point.

LONDON CITY AIRPORT

UNIVERSITY OF EAST LONDON

CANARY WHARF

THE CITY

O₂

EXCEL CENTRE & CUSTOM HOUSE CROSSRAIL

ABP ROYAL ALBERT DOCKS



GALLIONS POINT



A NEW LONDON NEIGHBOURHOOD

Gallions Point is a vibrant new community offering stylish, modern apartments and excellent community facilities – right next to Gallions Reach DLR station. It's the perfect place to make your home, right in the heart of East London's most up-and-coming district.



Computer generated image of Gallions Point is indicative only.



LAYOUT



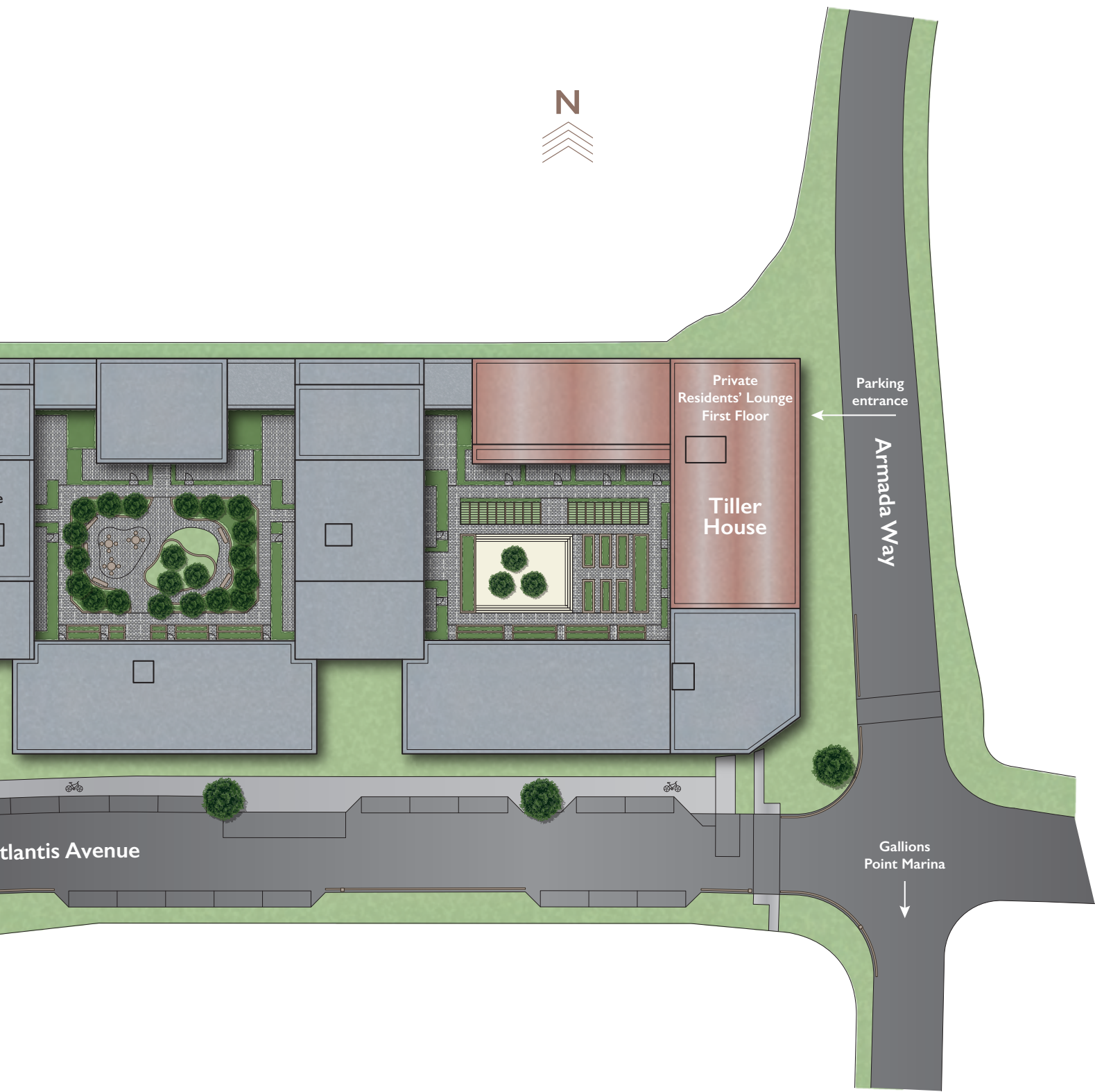
Concierge

Private Residents' Lounge
Ground Floor

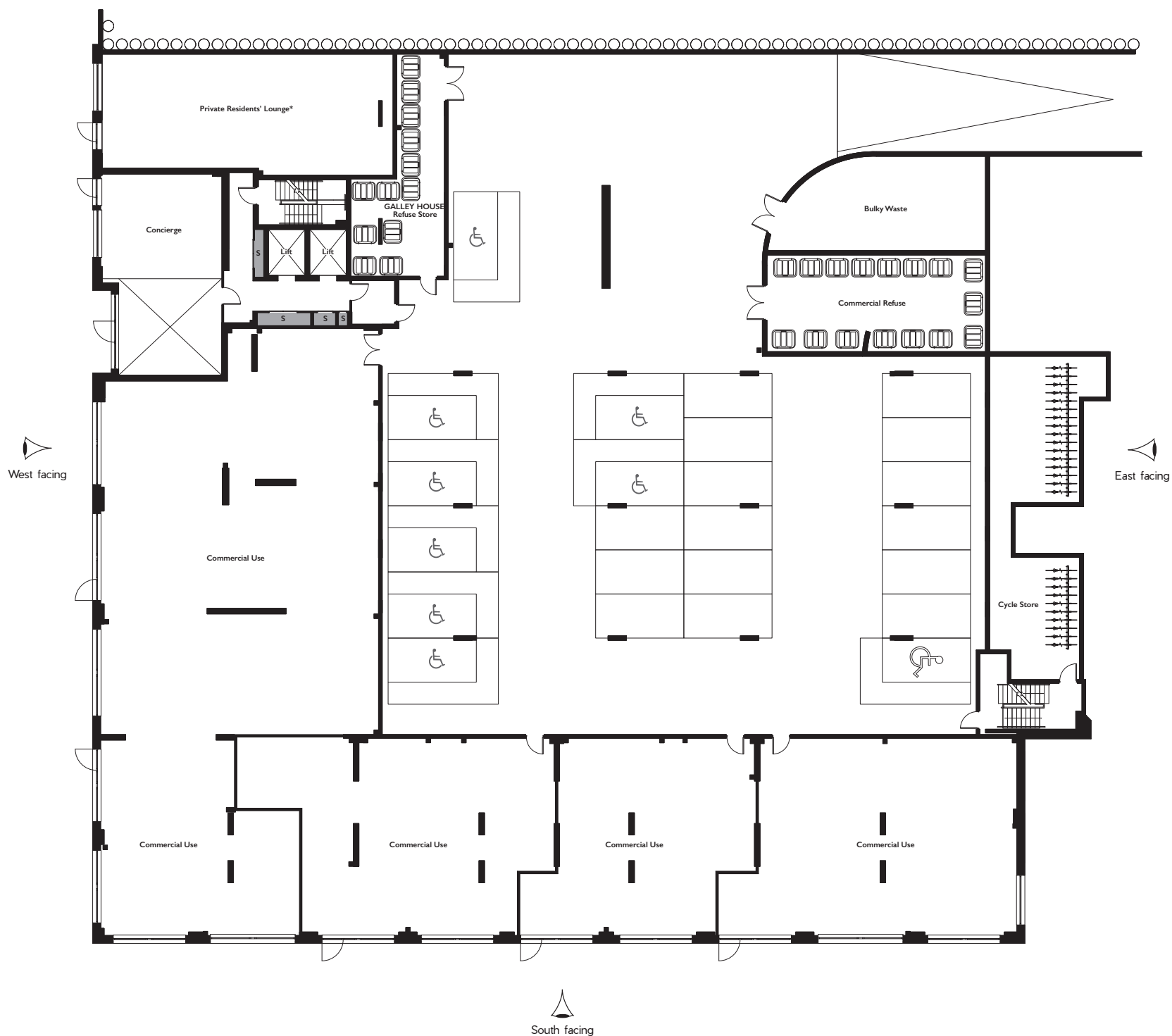
Galley House

Bike Store

Royal Albert Dock



Development layout not to scale, for indication only.
Proposed landscaping subject to final design clearance and delivery of future residential.



GALLEY HOUSE

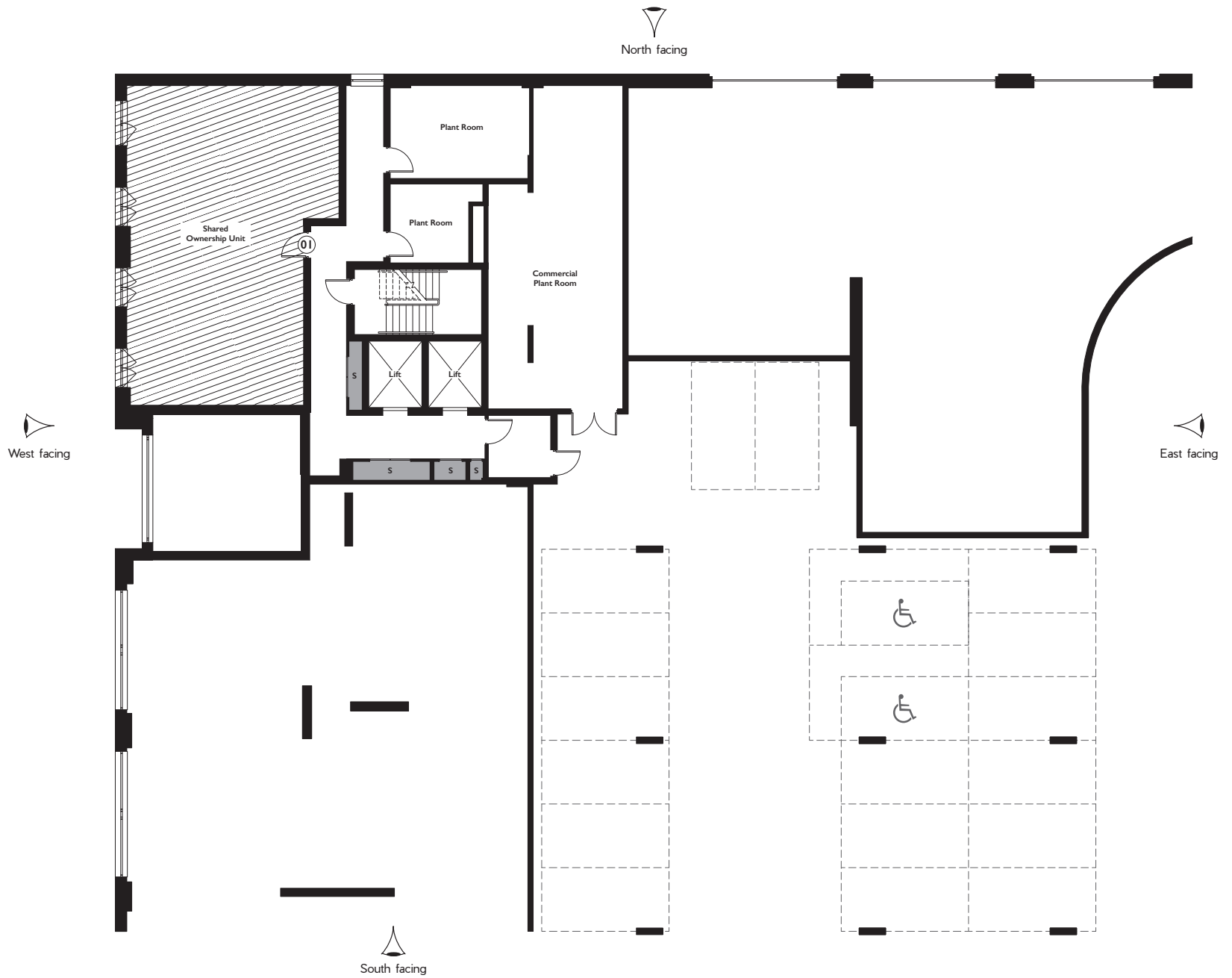
LOWER GROUND FLOOR

Arrows denote where measurements have been taken from. S = Services. *Note to residents - the Residents' Lounge will not be available upon first occupation.

We operate a policy of continuous improvement and individual features such as kitchen and bathroom layouts, doors, windows and elevational treatments may vary from time to time. Consequently these particulars should be treated as general guidance only and do not constitute a contract, part of a contract or a warranty. External finishes, landscaping and configuration may vary. Please refer to Sales Advisor for further details. All dimensions are approximate and should not be used for carpet sizes, appliance spaces or furniture. Furniture not to scale and all positions are indicative.



Computer generated image of one of the beautifully landscaped private gardens for the exclusive use of Gallions Point residents is indicative only.



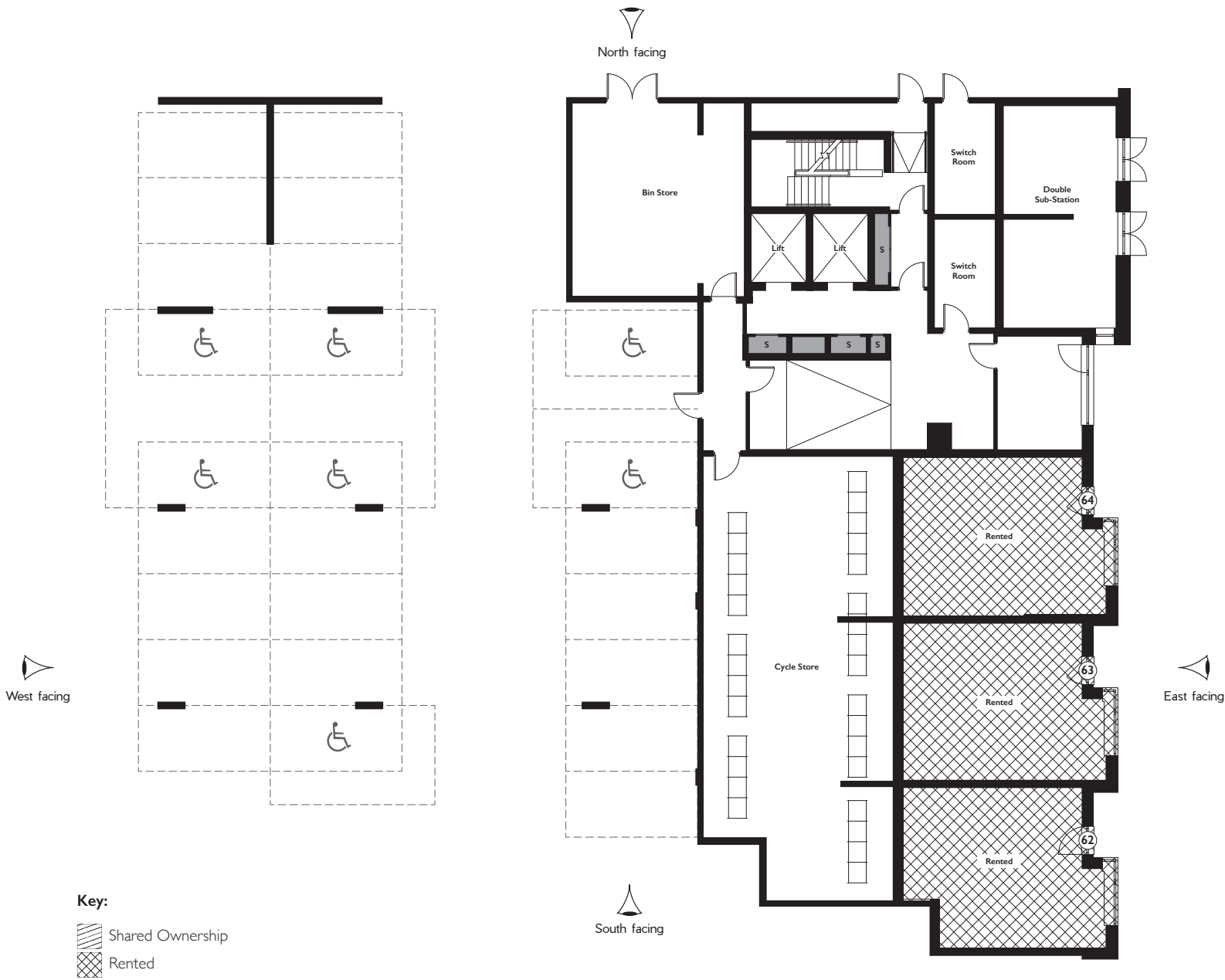
GALLEY HOUSE » GROUND FLOOR

PARKING PLAN

Arrows denote where measurements have been taken from. S = Services.

We operate a policy of continuous improvement and individual features such as kitchen and bathroom layouts, doors, windows and elevational treatments may vary from time to time. Consequently these particulars should be treated as general guidance only and do not constitute a contract, part of a contract or a warranty. External finishes, landscaping and configuration may vary. Please refer to Sales Advisor for further details. All dimensions are approximate and should not be used for carpet sizes, appliance spaces or furniture. Furniture not to scale and all positions are indicative.

TILLER HOUSE >>> GROUND FLOOR





North facing

West facing towards
ExCeL London and
ABP Royal Albert Dock

South facing into
internal courtyard

East facing into
internal courtyard

GALLEY HOUSE >>> 1ST FLOOR

APARTMENT A07		
Kitchen/Living/Dining	6.66m x 6.23m	21'0" x 20'5"
Bedroom 1	4.39m x 2.98m	14'4" x 9'9"
Bedroom 2	3.21m x 3.16m	10'6" x 10'4"
TOTAL AREA	84.0 sq m	904 sq ft

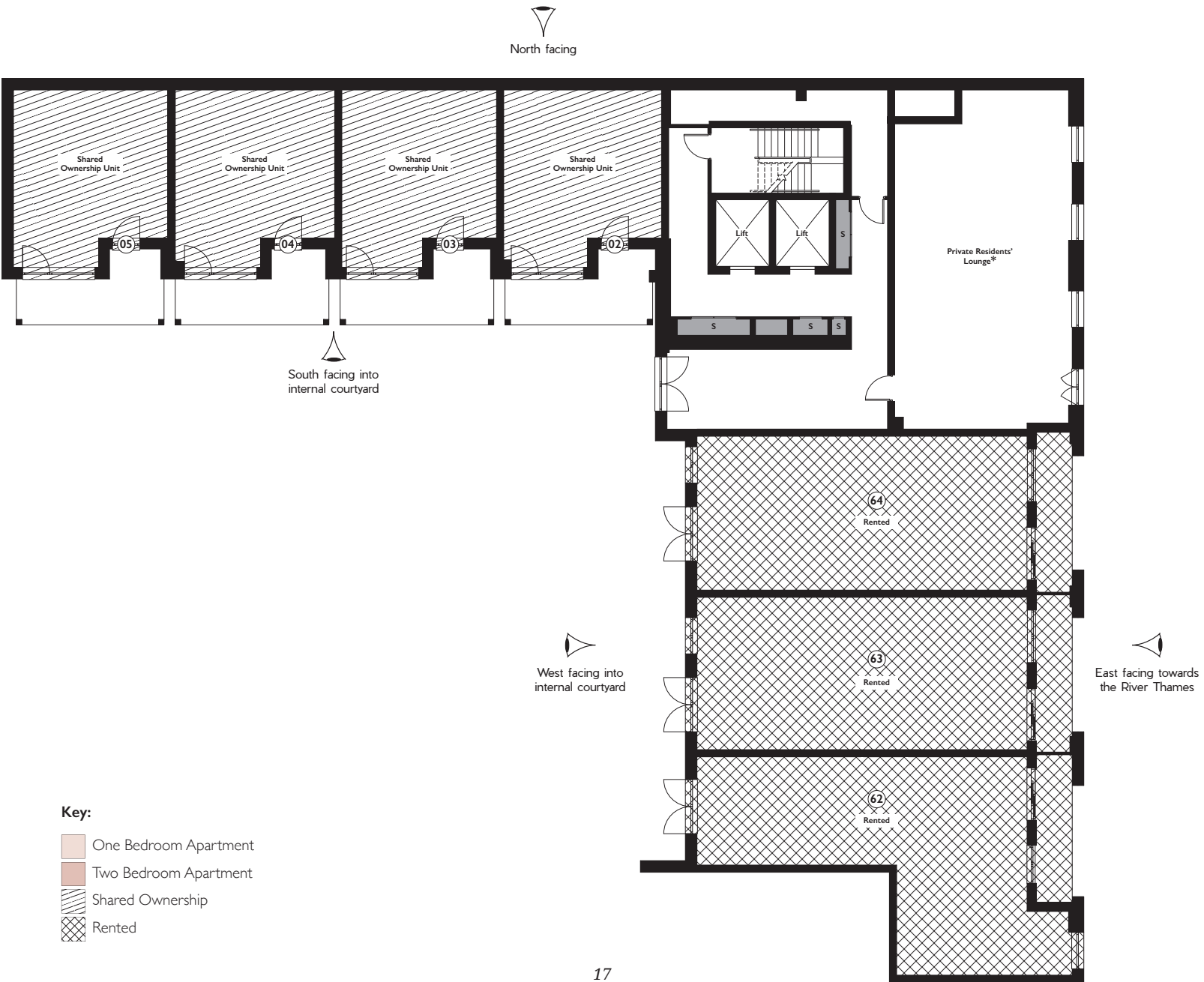
APARTMENT A08		
Kitchen/Living/Dining	6.66m x 5.42m	21'10" x 17'9"
Bedroom 1	4.36m x 2.75m	14'3" x 9'0"
Bedroom 2	3.21m x 2.36m	10'6" x 7'8"
TOTAL AREA	71.2 sq m	766 sq ft

APARTMENT A09		
Kitchen/Living/Dining	6.88m x 6.43m	22'7" x 21'1"
Bedroom 1	4.52m x 4.27m	14'10" x 14'0"
Bedroom 2	3.92m x 3.49m	12'10" x 11'5"
TOTAL AREA	93.3 sq m	1,004 sq ft

Arrows denote where measurements have been taken from. S = Services. *Note to residents - the Residents' Lounge will not be available upon first occupation.

We operate a policy of continuous improvement and individual features such as kitchen and bathroom layouts, doors, windows and elevational treatments may vary from time to time. Consequently these particulars should be treated as general guidance only and do not constitute a contract, part of a contract or a warranty. External finishes, landscaping and configuration may vary. Please refer to Sales Advisor for further details. All dimensions are approximate and should not be used for carpet sizes, appliance spaces or furniture. Furniture not to scale and all positions are indicative.

TILLER HOUSE >>> 1ST FLOOR





North facing

West facing towards
ExCeL London and
ABP Royal Albert Dock

South facing into
internal courtyard

East facing into
internal courtyard

GALLEY HOUSE >>> 2ND FLOOR

APARTMENT A10

Kitchen/Living/Dining	10.35m x 2.91m	33'11" x 9'6"
Bedroom	3.74m x 2.92m	12'3" x 9'7"
TOTAL AREA	51.4 sq m	553 sq ft

APARTMENT A11

Kitchen/Living/Dining	10.35m x 2.93m	33'11" x 9'7"
Bedroom	3.74m x 2.92m	12'3" x 9'7"
TOTAL AREA	51.2 sq m	551 sq ft

APARTMENT A12

Kitchen/Living/Dining	10.35m x 2.89m	33'11" x 9'5"
Bedroom	3.74m x 2.92m	12'3" x 9'7"
TOTAL AREA	51.2 sq m	551 sq ft

APARTMENT A13

Kitchen/Living/Dining	6.14m x 5.65m	20'1" x 18'6"
Bedroom	4.33m x 3.34m	14'2" x 10'11"
TOTAL AREA	66.1 sq m	711 sq ft

APARTMENT A14

Kitchen/Living/Dining	6.66m x 4.86m	21'10" x 15'11"
Bedroom	4.34m x 3.17m	14'2" x 10'4"
TOTAL AREA	54.1 sq m	582 sq ft

APARTMENT A15

Kitchen/Living/Dining	8.28m x 3.60m	27'1" x 11'9"
Bedroom	4.34m x 3.16m	14'2" x 10'4"
TOTAL AREA	56.8 sq m	611 sq ft

APARTMENT A16

Kitchen/Living/Dining	6.66m x 6.23m	21'10" x 20'5"
Bedroom 1	4.39m x 2.98m	14'4" x 9'9"
Bedroom 2	3.21m x 3.16m	10'6" x 10'4"
TOTAL AREA	84.0 sq m	904 sq ft

APARTMENT A17

Kitchen/Living/Dining	6.66m x 5.42m	21'10" x 17'9"
Bedroom 1	4.36m x 2.75m	14'3" x 9'0"
Bedroom 2	3.21m x 2.36m	10'6" x 7'8"
TOTAL AREA	71.2 sq m	766 sq ft

APARTMENT A18

Kitchen/Living/Dining	6.88m x 6.43m	22'7" x 21'1"
Bedroom 1	4.27m x 2.83m	14'0" x 9'3"
Bedroom 2	3.49m x 3.12m	11'5" x 10'2"
TOTAL AREA	86.1 sq m	927 sq ft

Arrows denote where measurements have been taken from. S = Services.

We operate a policy of continuous improvement and individual features such as kitchen and bathroom layouts, doors, windows and elevational treatments may vary from time to time. Consequently these particulars should be treated as general guidance only and do not constitute a contract, part of a contract or a warranty. External finishes, landscaping and configuration may vary. Please refer to Sales Advisor for further details. All dimensions are approximate and should not be used for carpet sizes, appliance spaces or furniture. Furniture not to scale and all positions are indicative.

APARTMENT H06

Kitchen/Living/Dining	6.75m x 6.57m	22'1" x 21'6"
Bedroom 1	6.57m x 4.57m	21'6" x 14'11"
Bedroom 2	4.26m x 3.12m	13'11" x 10'2"
TOTAL AREA	99.0 sq m	1,066 sq ft

APARTMENT H09

Kitchen/Living/Dining	8.28m x 3.48m	27'2" x 11'4"
Bedroom	4.36m x 3.16m	14'3" x 10'4"
TOTAL AREA	55.8 sq m	601 sq ft

APARTMENT H07

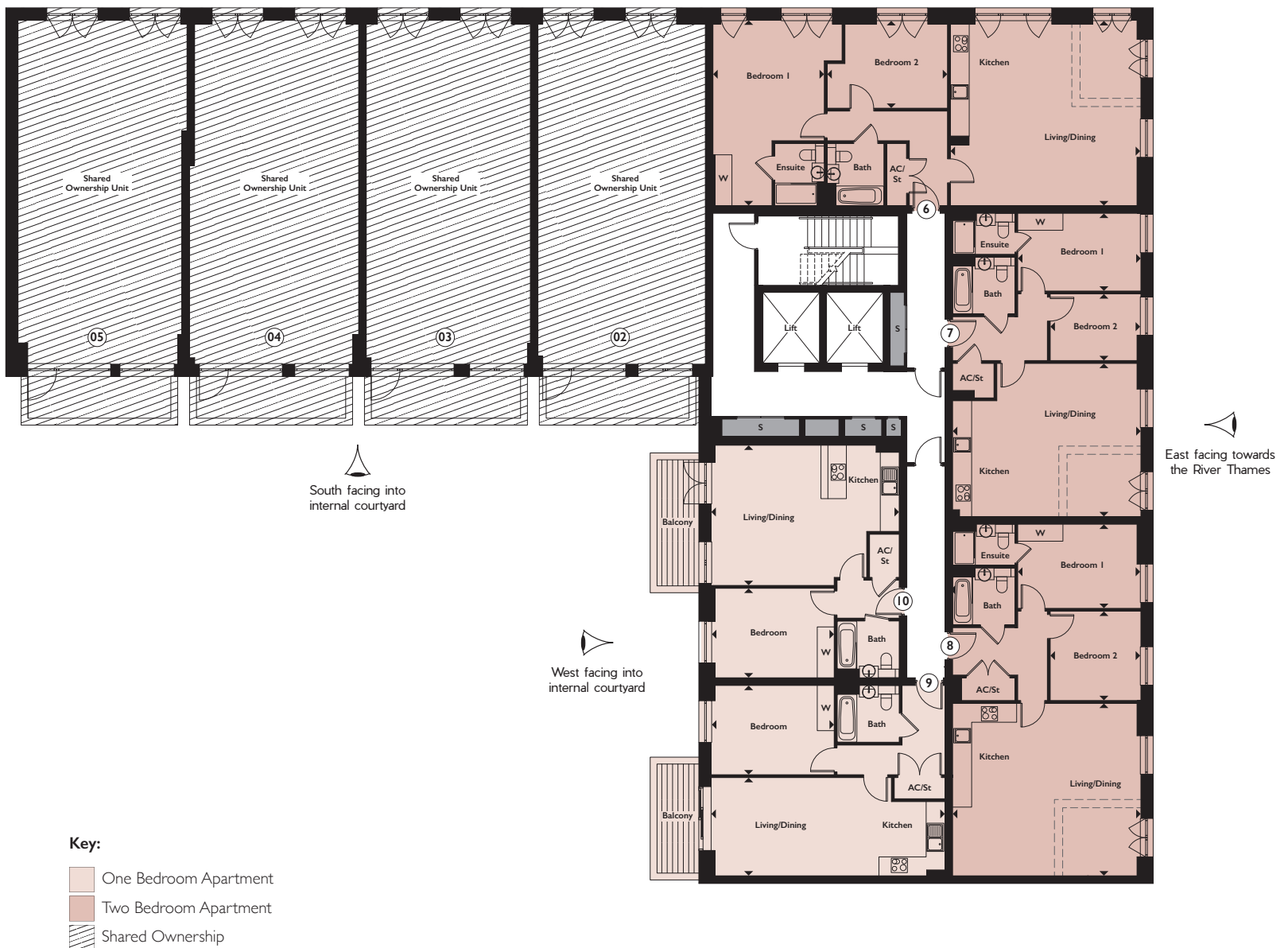
Kitchen/Living/Dining	6.66m x 5.42m	21'10" x 17'9"
Bedroom 1	4.36m x 2.75m	14'3" x 9'0"
Bedroom 2	3.21m x 2.36m	10'6" x 7'8"
TOTAL AREA	71.2 sq m	766 sq ft

APARTMENT H10

Kitchen/Living/Dining	6.66m x 4.96m	21'10" x 16'3"
Bedroom	4.36m x 3.17m	14'3" x 10'4"
TOTAL AREA	54.8 sq m	590 sq ft

APARTMENT H08

Kitchen/Living/Dining	6.66m x 6.10m	21'10" x 20'0"
Bedroom 1	4.36m x 2.98m	14'3" x 9'9"
Bedroom 2	3.21m x 3.16m	10'6" x 10'4"
TOTAL AREA	82.6 sq m	889 sq ft

TILLER HOUSE >>> 2ND FLOOR

North facing

West facing towards
ExCeL London and
ABP Royal Albert Dock

South facing into
internal courtyard

East facing into
internal courtyard

Key:

- One Bedroom Apartment
- Two Bedroom Apartment
- Shared Ownership

GALLEY HOUSE >>> 3RD FLOOR

APARTMENT A19

Kitchen/Living/Dining	10.35m x 2.91m	33'11" x 9'6"
Bedroom	3.74m x 2.92m	12'3" x 9'7"
TOTAL AREA	51.4 sq m	553 sq ft

APARTMENT A20

Kitchen/Living/Dining	10.35m x 2.93m	33'11" x 9'7"
Bedroom	3.74m x 2.92m	12'3" x 9'7"
TOTAL AREA	51.2 sq m	551 sq ft

APARTMENT A21

Kitchen/Living/Dining	10.35m x 2.89m	33'11" x 9'5"
Bedroom	3.74 m x 2.92m	12'3" x 9'7"
TOTAL AREA	51.2 sq m	551 sq ft

APARTMENT A22

Kitchen/Living/Dining	6.14m x 5.65m	20'1" x 18'6"
Bedroom	4.33m x 3.34m	14'2" x 10'11"
TOTAL AREA	66.1 sq m	711 sq ft

APARTMENT A23

Kitchen/Living/Dining	6.66m x 4.86m	21'10" x 15'11"
Bedroom	4.34m x 3.17m	14'2" x 10'4"
TOTAL AREA	54.1 sq m	582 sq ft

APARTMENT A24

Kitchen/Living/Dining	8.28m x 3.60m	27'1" x 11'9"
Bedroom	4.34m x 3.16m	14'2" x 10'4"
TOTAL AREA	56.8 sq m	611 sq ft

APARTMENT A25

Kitchen/Living/Dining	6.66m x 6.23m	21'10" x 20'5"
Bedroom 1	4.39m x 2.98m	14'4" x 9'9"
Bedroom 2	3.21m x 3.16m	10'6" x 10'4"
TOTAL AREA	84.0 sq m	904 sq ft

APARTMENT A26

Kitchen/Living/Dining	6.66m x 5.42m	21'10" x 17'9"
Bedroom 1	4.36m x 2.75m	14'3" x 9'0"
Bedroom 2	3.21m x 2.36m	10'6" x 7'8"
TOTAL AREA	71.2 sq m	766 sq ft

APARTMENT A27

Kitchen/Living/Dining	6.88m x 6.43m	22'7" x 21'1"
Bedroom 1	4.27m x 2.83m	14'0" x 9'3"
Bedroom 2	3.49m x 3.12m	11'5" x 10'2"
TOTAL AREA	86.1 sq m	927 sq ft

Arrows denote where measurements have been taken from. S = Services.

We operate a policy of continuous improvement and individual features such as kitchen and bathroom layouts, doors, windows and elevational treatments may vary from time to time. Consequently these particulars should be treated as general guidance only and do not constitute a contract, part of a contract or a warranty. External finishes, landscaping and configuration may vary. Please refer to Sales Advisor for further details. All dimensions are approximate and should not be used for carpet sizes, appliance spaces or furniture. Furniture not to scale and all positions are indicative.

APARTMENT H11

Kitchen/Living/Dining	6.75m x 6.57m	22'1" x 21'6"
Bedroom 1	4.72m x 2.83m	15'5" x 9'3"
Bedroom 2	3.63m x 3.12m	11'10" x 10'2"
TOTAL AREA	87.5 sq m	942 sq ft

APARTMENT H14

Kitchen/Living/Dining	8.28m x 3.48m	27'2" x 11'4"
Bedroom	4.36m x 3.16m	14'3" x 10'4"
TOTAL AREA	55.8 sq m	601 sq ft

APARTMENT H17

Kitchen/Living/Dining	10.40m x 2.89m	34'1" x 9'5"
Bedroom	3.74m x 2.92m	12'3" x 9'7"
TOTAL AREA	51.2 sq m	551 sq ft

APARTMENT H12

Kitchen/Living/Dining	6.66m x 5.42m	21'10" x 17'9"
Bedroom 1	4.36m x 2.75m	14'3" x 9'0"
Bedroom 2	3.21m x 2.36m	10'6" x 7'8"
TOTAL AREA	71.2 sq m	766 sq ft

APARTMENT H15

Kitchen/Living/Dining	6.66m x 4.96m	21'10" x 16'3"
Bedroom	4.36m x 3.17m	14'3" x 10'4"
TOTAL AREA	54.8 sq m	590 sq ft

APARTMENT H18

Kitchen/Living/Dining	10.38m x 2.89m	34'0" x 9'5"
Bedroom	3.74m x 2.92m	12'3" x 9'7"
TOTAL AREA	51.2 sq m	551 sq ft

APARTMENT H13

Kitchen/Living/Dining	6.66m x 6.10m	21'10" x 20'0"
Bedroom 1	4.36m x 2.98m	14'3" x 9'9"
Bedroom 2	3.21m x 3.16m	10'6" x 10'4"
TOTAL AREA	82.6 sq m	889 sq ft

APARTMENT H16

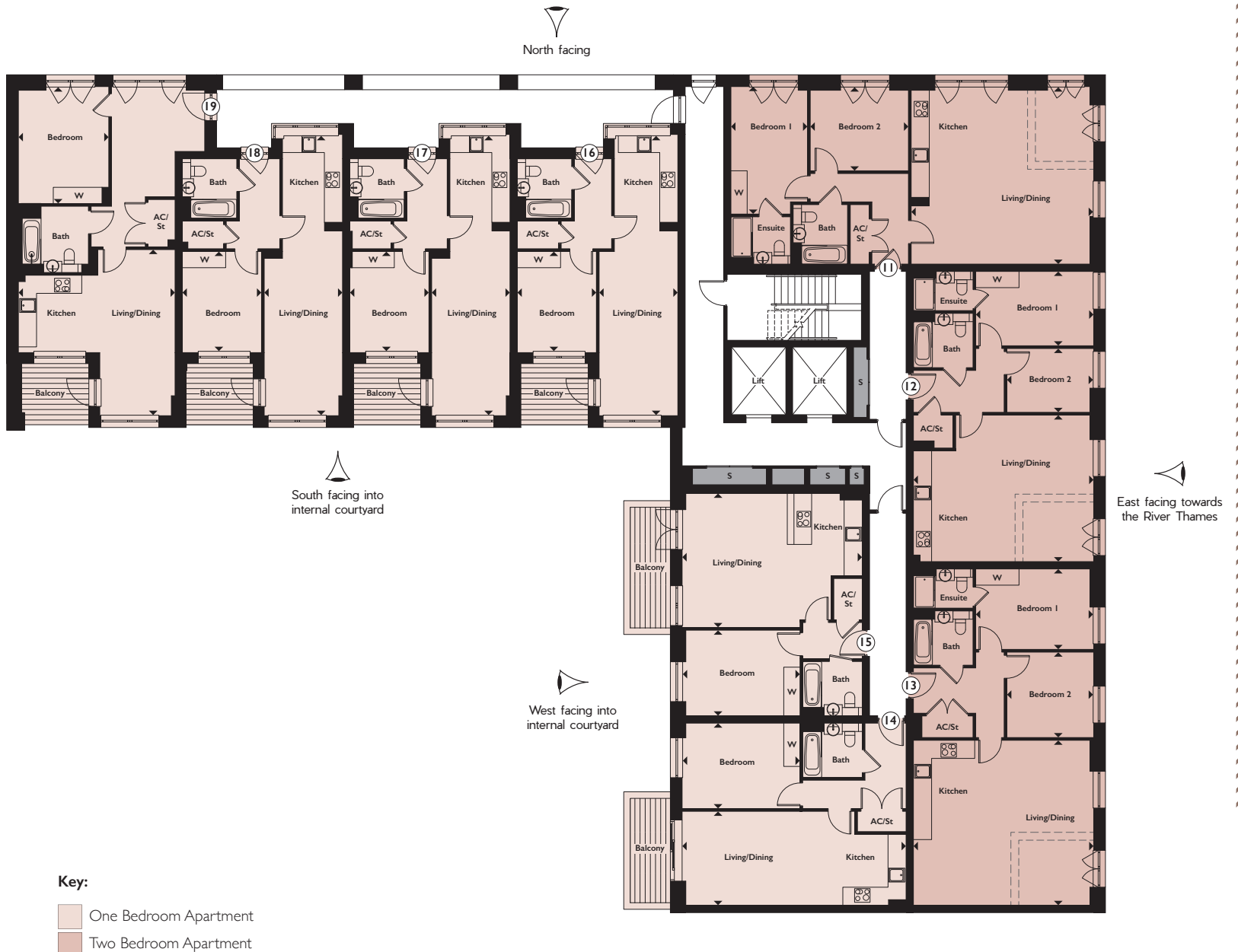
Kitchen/Living/Dining	10.40m x 2.91m	34'1" x 9'6"
Bedroom	3.74m x 2.92m	13'3" x 9'7"
TOTAL AREA	51.4 sq m	553 sq ft

APARTMENT H19

Kitchen/Living/Dining	6.14m x 5.79m	20'1" x 18'11"
Bedroom	4.33m x 3.34m	14'2" x 10'11"
TOTAL AREA	66.1 sq m	711 sq ft

TILLER HOUSE

3RD FLOOR



North facing

West facing towards
ExCeL London and
ABP Royal Albert Dock

South facing into
internal courtyard

East facing into
internal courtyard

GALLEY HOUSE >>> 4TH FLOOR

APARTMENT A28

Kitchen/Living/Dining	10.35m x 2.91m	33'11" x 9'6"
Bedroom	3.74m x 2.92m	12'3" x 9'7"
TOTAL AREA	51.4 sq m	553 sq ft

APARTMENT A29

Kitchen/Living/Dining	10.35m x 2.93m	33'11" x 9'7"
Bedroom	3.74m x 2.92m	12'3" x 9'7"
TOTAL AREA	51.2 sq m	551 sq ft

APARTMENT A30

Kitchen/Living/Dining	10.35m x 2.89m	33'11" x 9'5"
Bedroom	3.74m x 2.92m	12'3" x 9'7"
TOTAL AREA	51.2 sq m	551 sq ft

APARTMENT A31

Kitchen/Living/Dining	6.14m x 5.65m	20'1" x 18'6"
Bedroom	4.33m x 3.34m	14'2" x 10'11"
TOTAL AREA	66.1 sq m	711 sq ft

APARTMENT A32

Kitchen/Living/Dining	6.66m x 4.86m	21'10" x 15'11"
Bedroom	4.34m x 3.17m	14'2" x 10'4"
TOTAL AREA	54.1 sq m	582 sq ft

APARTMENT A33

Kitchen/Living/Dining	8.28m x 3.60m	27'1" x 11'9"
Bedroom	4.34m x 3.16m	14'2" x 10'4"
TOTAL AREA	56.8 sq m	611 sq ft

APARTMENT A34

Kitchen/Living/Dining	6.66m x 6.23m	21'10" x 20'5"
Bedroom 1	4.39m x 2.98m	14'4" x 9'9"
Bedroom 2	3.21m x 3.16m	10'6" x 10'4"
TOTAL AREA	84.0 sq m	904 sq ft

APARTMENT A35

Kitchen/Living/Dining	6.66m x 5.42m	21'10" x 17'9"
Bedroom 1	4.36m x 2.75m	14'3" x 9'0"
Bedroom 2	3.21m x 2.36m	10'6" x 7'8"
TOTAL AREA	71.2 sq m	766 sq ft

APARTMENT A36

Kitchen/Living/Dining	6.88m x 6.43m	22'7" x 21'1"
Bedroom 1	4.27m x 2.83m	14'0" x 9'3"
Bedroom 2	3.49m x 3.12m	11'5" x 10'2"
TOTAL AREA	86.1 sq m	927 sq ft

Arrows denote where measurements have been taken from. S = Services.

We operate a policy of continuous improvement and individual features such as kitchen and bathroom layouts, doors, windows and elevational treatments may vary from time to time. Consequently these particulars should be treated as general guidance only and do not constitute a contract, part of a contract or a warranty. External finishes, landscaping and configuration may vary. Please refer to Sales Advisor for further details. All dimensions are approximate and should not be used for carpet sizes, appliance spaces or furniture. Furniture not to scale and all positions are indicative.

APARTMENT H20

Kitchen/Living/Dining	6.75m x 6.57m	22'1" x 21'6"
Bedroom 1	4.72m x 2.83m	15'5" x 9'3"
Bedroom 2	3.63m x 3.12m	11'10" x 10'2"
TOTAL AREA	87.5 sq m	942 sq ft

APARTMENT H23

Kitchen/Living/Dining	8.28m x 3.48m	27'2" x 11'4"
Bedroom	4.36m x 3.16m	14'3" x 10'4"
TOTAL AREA	55.8 sq m	601 sq ft

APARTMENT H26

Kitchen/Living/Dining	10.40m x 2.89m	34'1" x 9'5"
Bedroom	3.74m x 2.92m	12'3" x 9'7"
TOTAL AREA	51.2 sq m	551 sq ft

APARTMENT H21

Kitchen/Living/Dining	6.66m x 5.42m	21'10" x 17'9"
Bedroom 1	4.36m x 2.75m	14'3" x 9'0"
Bedroom 2	3.21m x 2.36m	10'6" x 7'8"
TOTAL AREA	71.2 sq m	766 sq ft

APARTMENT H24

Kitchen/Living/Dining	6.66m x 4.96m	21'10" x 16'3"
Bedroom	4.36m x 3.17m	14'3" x 10'4"
TOTAL AREA	54.8 sq m	590 sq ft

APARTMENT H27

Kitchen/Living/Dining	10.38m x 2.89m	34'0" x 9'5"
Bedroom	3.74m x 2.92m	12'3" x 9'7"
TOTAL AREA	51.2 sq m	551 sq ft

APARTMENT H22

Kitchen/Living/Dining	6.66m x 6.10m	21'10" x 20'0"
Bedroom 1	4.36m x 2.98m	14'3" x 9'9"
Bedroom 2	3.21m x 3.16m	10'6" x 10'4"
TOTAL AREA	82.6 sq m	889 sq ft

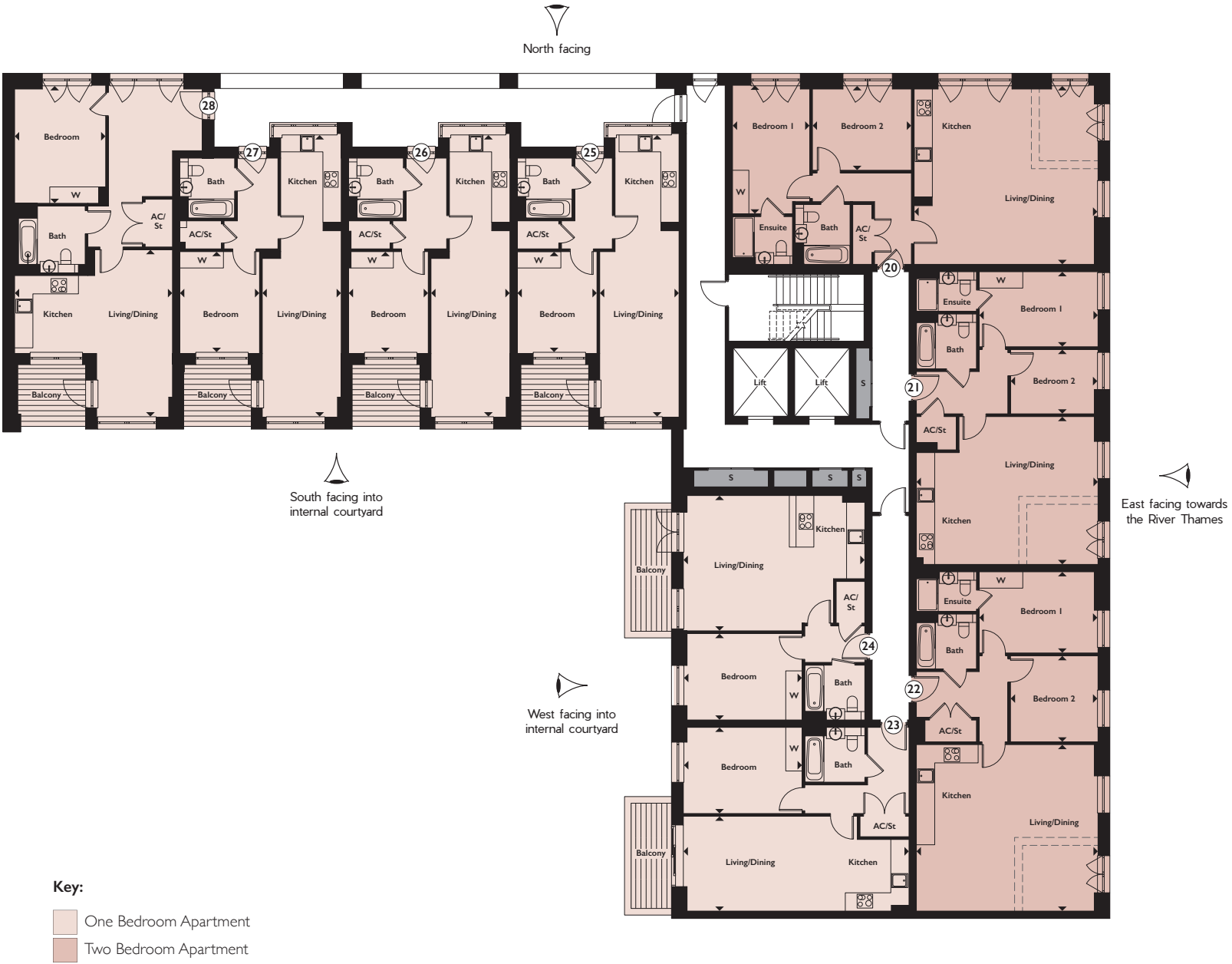
APARTMENT H25

Kitchen/Living/Dining	10.40m x 2.91m	34'1" x 9'6"
Bedroom	3.74m x 2.92m	12'3" x 9'7"
TOTAL AREA	51.4 sq m	553 sq ft

APARTMENT H28

Kitchen/Living/Dining	6.14m x 5.79m	20'1" x 18'11"
Bedroom	4.33m x 3.34m	14'2" x 10'11"
TOTAL AREA	66.1 sq m	711 sq ft

TILLER HOUSE >>> 4TH FLOOR





North facing

West facing towards
ExCeL London and
ABP Royal Albert Dock

South facing into
internal courtyard

East facing into
internal courtyard

GALLEY HOUSE >>> 5TH FLOOR

APARTMENT A37

Kitchen/Living/Dining	6.49m x 3.69m	21'3" x 12'1"
Bedroom 1	4.4m x 3.31m	14'5" x 10'10"
Bedroom 2	3.34m x 3.25m	10'11" x 10'8"
TOTAL AREA	70.4 sq m	758 sq ft

APARTMENT A38

Kitchen/Living/Dining	6.49m x 3.7m	21'3" x 12'1"
Bedroom 1	4.4m x 3.31m	14'5" x 10'10"
Bedroom 2	3.34m x 3.25m	10'11" x 10'8"
TOTAL AREA	70.4 sq m	758 sq ft

APARTMENT A39

Kitchen/Living/Dining	7.36m x 4.15m	24'1" x 13'7"
Bedroom 1	4.02m x 3.21m	13'2" x 10'6"
Bedroom 2	4.15m x 2.92m	13'7" x 9'6"
TOTAL AREA	76.3 sq m	821 sq ft

APARTMENT A40

Kitchen/Living/Dining	6.66m x 4.86m	21'10" x 15'11"
Bedroom	4.34m x 3.17m	14'2" x 10'4"
TOTAL AREA	54.1 sq m	582 sq ft

APARTMENT A41

Kitchen/Living/Dining	6.86m x 3.37m	22'6" x 11'0"
Bedroom	4.81m x 3.39m	15'9" x 11'1"
TOTAL AREA	56.8 sq m	611 sq ft

APARTMENT A42

Kitchen/Living/Dining	6.66m x 6.23m	21'10" x 20'5"
Bedroom 1	4.39m x 2.98m	14'4" x 9'9"
Bedroom 2	3.21m x 3.16m	10'6" x 10'4"
TOTAL AREA	84.0 sq m	904 sq ft

APARTMENT A43

Kitchen/Living/Dining	6.66m x 5.42m	21'10" x 17'9"
Bedroom 1	4.36m x 2.75m	14'3" x 9'0"
Bedroom 2	3.21m x 2.36m	10'6" x 7'8"
TOTAL AREA	71.2 sq m	766 sq ft

APARTMENT A44

Kitchen/Living/Dining	6.88m x 6.43m	22'7" x 21'1"
Bedroom 1	4.27m x 2.83m	14'0" x 9'3"
Bedroom 2	3.49m x 3.12m	11'5" x 10'2"
TOTAL AREA	86.1 sq m	927 sq ft

Arrows denote where measurements have been taken from. S = Services.

We operate a policy of continuous improvement and individual features such as kitchen and bathroom layouts, doors, windows and elevational treatments may vary from time to time. Consequently these particulars should be treated as general guidance only and do not constitute a contract, part of a contract or a warranty. External finishes, landscaping and configuration may vary. Please refer to Sales Advisor for further details. All dimensions are approximate and should not be used for carpet sizes, appliance spaces or furniture. Furniture not to scale and all positions are indicative.

APARTMENT H29

Kitchen/Living/Dining	6.75m x 6.57m	22'1" x 21'6"
Bedroom 1	4.72m x 2.83m	15'5" x 9'3"
Bedroom 2	3.63m x 3.12m	11'10" x 10'2"
TOTAL AREA	87.5 sq m	942 sq ft

APARTMENT H30

Kitchen/Living/Dining	6.66m x 5.42m	21'10" x 17'9"
Bedroom 1	4.36m x 2.75m	14'3" x 9'0"
Bedroom 2	3.21m x 2.36m	10'6" x 7'8"
TOTAL AREA	71.2 sq m	766 sq ft

APARTMENT H31

Kitchen/Living/Dining	6.66m x 6.10m	21'10" x 20'0"
Bedroom 1	4.36m x 2.98m	14'3" x 9'9"
Bedroom 2	3.21m x 3.16m	10'6" x 10'4"
TOTAL AREA	82.6 sq m	889 sq ft

APARTMENT H32

Kitchen/Living/Dining	8.28m x 3.48m	27'2" x 11'4"
Bedroom	4.36m x 3.16m	14'3" x 10'4"
TOTAL AREA	55.8 sq m	601 sq ft

APARTMENT H33

Kitchen/Living/Dining	6.66m x 4.96m	21'10" x 16'3"
Bedroom	4.36m x 3.17m	14'3" x 10'4"
TOTAL AREA	54.8 sq m	590 sq ft

APARTMENT H34

Kitchen/Living/Dining	6.49m x 3.69m	21'3" x 12'1"
Bedroom 1	4.40m x 3.31m	14'5" x 10'10"
Bedroom 2	3.34m x 3.25m	10'11" x 10'8"
TOTAL AREA	70.0 sq m	753 sq ft

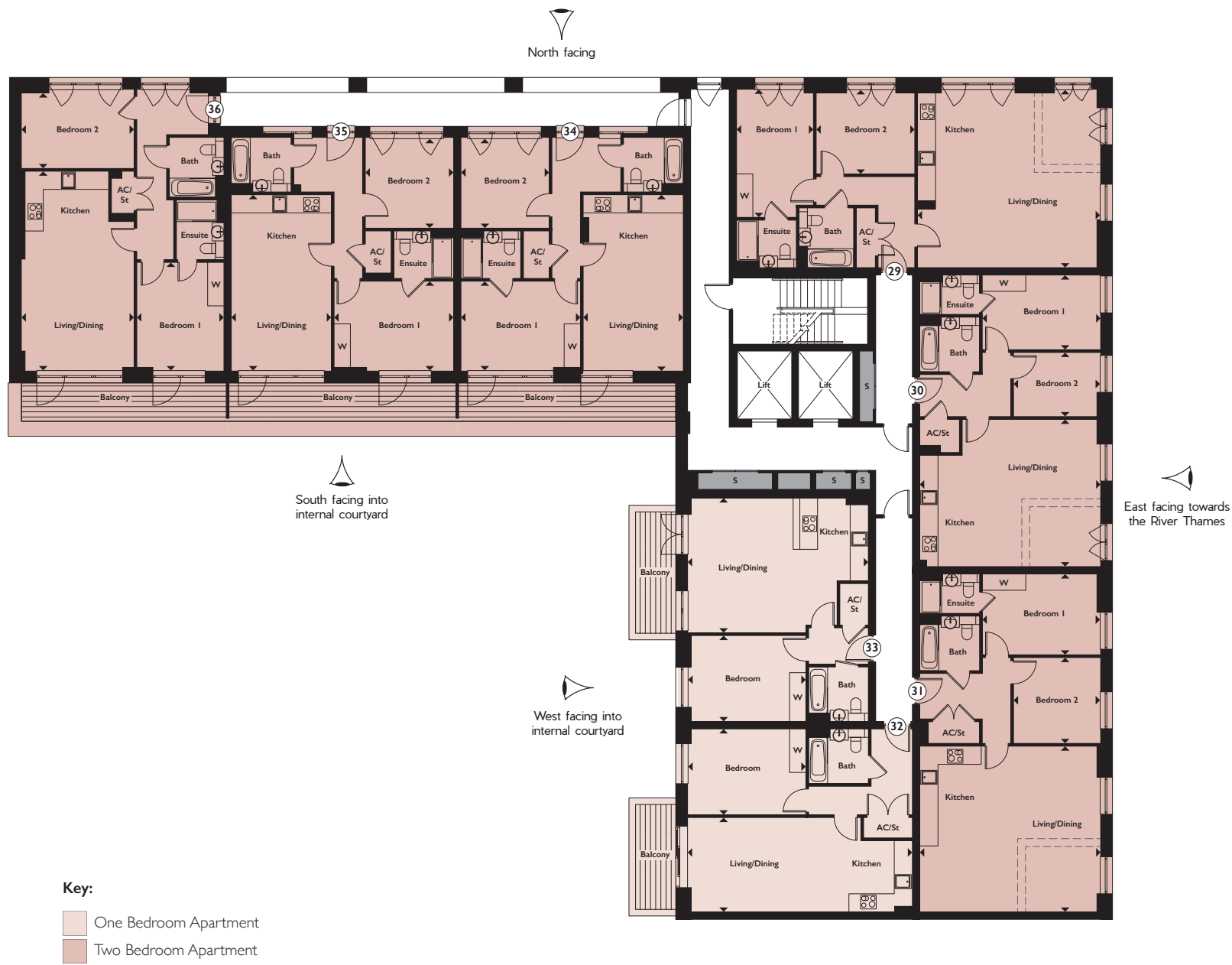
APARTMENT H35

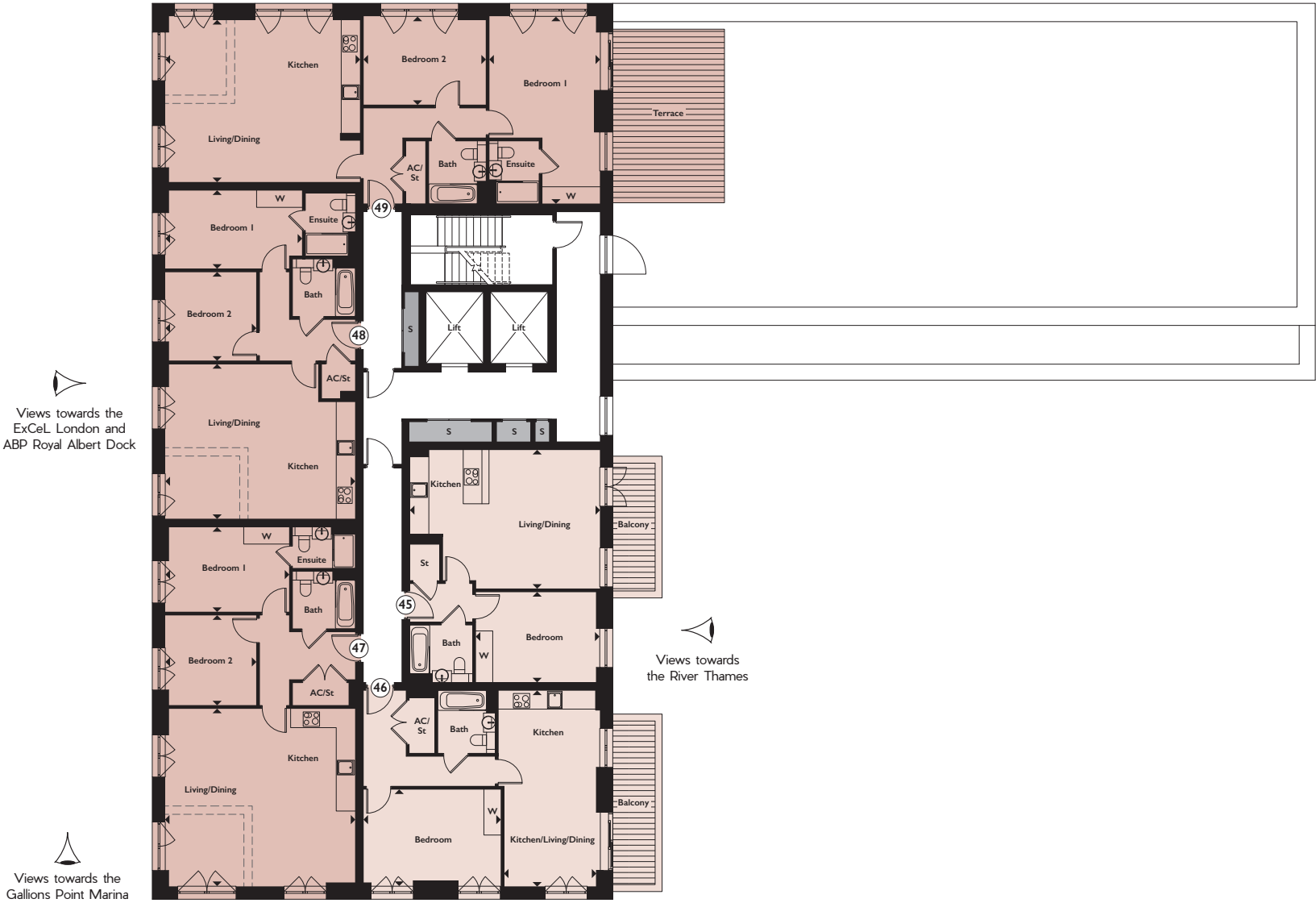
Kitchen/Living/Dining	6.49m x 3.69m	21'3" x 12'1"
Bedroom 1	4.40m x 3.31m	14'5" x 10'10"
Bedroom 2	3.34m x 3.25m	10'11" x 10'8"
TOTAL AREA	70.0 sq m	753 sq ft

APARTMENT H36

Kitchen/Living/Dining	7.36m x 4.15m	24'1" x 13'7"
Bedroom 1	4.0m x 3.21m	13'1" x 10'6"
Bedroom 2	4.15m x 2.92m	13'7" x 9'6"
TOTAL AREA	76.3 sq m	821 sq ft

TILLER HOUSE 5TH FLOOR





GALLEY HOUSE >>> 6TH FLOOR

APARTMENT A45			
Kitchen/Living/Dining	6.66m x 4.86m	21'10" x 15'11"	
Bedroom	4.34m x 3.17m	14'2" x 10'4"	
TOTAL AREA	54.1 sq m	582 sq ft	

APARTMENT A46			
Kitchen/Living/Dining	6.86m x 3.37m	22'6" x 11'0"	
Bedroom	4.81m x 3.39m	15'9" x 11'1"	
TOTAL AREA	56.8 sq m	611 sq ft	

APARTMENT A47			
Kitchen/Living/Dining	6.66m x 6.23m	21'10" x 20'5"	
Bedroom 1	4.39m x 2.98m	14'4" x 9'9"	
Bedroom 2	3.21m x 3.16m	10'6" x 10'4"	
TOTAL AREA	84.0 sq m	904 sq ft	

APARTMENT A48			
Kitchen/Living/Dining	6.66m x 5.42m	21'10" x 17'9"	
Bedroom 1	4.81m x 2.75m	15'9" x 9'0"	
Bedroom 2	3.21m x 3.11m	10'6" x 10'2"	
TOTAL AREA	76.2 sq m	820 sq ft	

APARTMENT A49			
Kitchen/Living/Dining	6.88m x 5.68m	22'7" x 18'7"	
Bedroom 1	6.57m x 3.89m	21'6" x 12'9"	
Bedroom 2	4.24m x 3.12m	13'11" x 10'2"	
TOTAL AREA	94.3 sq m	1,015 sq ft	

Arrows denote where measurements have been taken from. S = Services.
We operate a policy of continuous improvement and individual features such as kitchen and bathroom layouts, doors, windows and elevational treatments may vary from time to time. Consequently these particulars should be treated as general guidance only and do not constitute a contract, part of a contract or a warranty. External finishes, landscaping and configuration may vary. Please refer to Sales Advisor for further details. All dimensions are approximate and should not be used for carpet sizes, appliance spaces or furniture. Furniture not to scale and all positions are indicative.

APARTMENT H37

Kitchen/Living/Dining	6.88m x 6.57m	22'7" x 21'6"
Bedroom 1	6.57m x 3.89m	21'6" x 12'9"
Bedroom 2	4.24m x 3.12m	13'11" x 10'2"
TOTAL AREA	99.5 sq m	1,071 sq ft

APARTMENT H38

Kitchen/Living/Dining	6.66m x 5.42m	21'10" x 17'9"
Bedroom 1	4.36m x 2.75m	14'3" x 9'0"
Bedroom 2	3.21m x 2.36m	10'6" x 7'8"
TOTAL AREA	71.2 sq m	766 sq ft

APARTMENT H39

Kitchen/Living/Dining	6.66m x 6.10m	21'10" x 20'0"
Bedroom 1	4.36m x 2.98m	14'3" x 9'9"
Bedroom 2	3.21m x 3.16m	10'6" x 10'4"
TOTAL AREA	82.6 sq m	889 sq ft

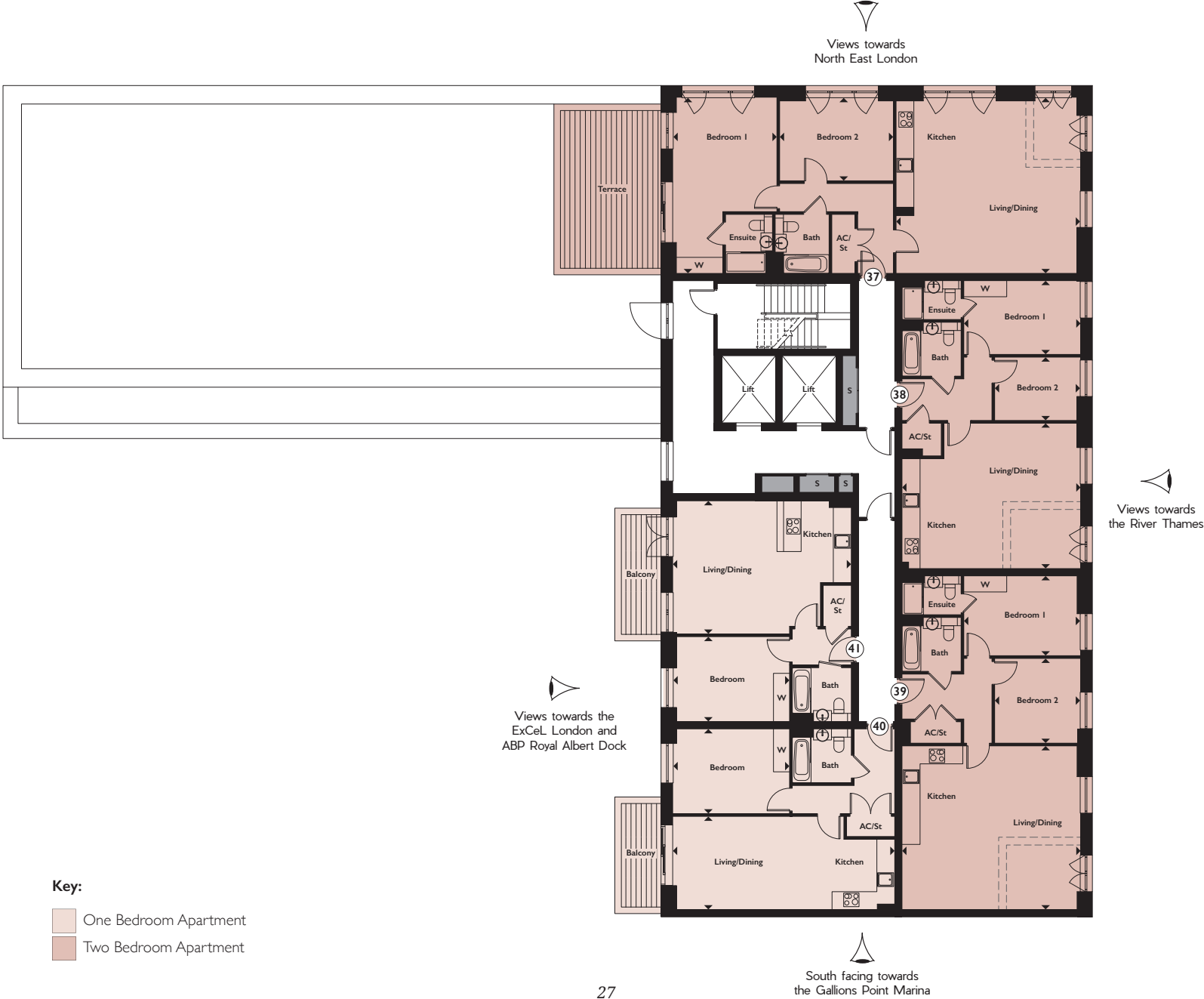
APARTMENT H40

Kitchen/Living/Dining	8.28m x 3.48m	27'2" x 11'4"
Bedroom	4.36m x 3.16m	14'3" x 10'4"
TOTAL AREA	55.8 sq m	601 sq ft

APARTMENT H41

Kitchen/Living/Dining	6.66m x 4.96m	21'10" x 16'3"
Bedroom	4.36m x 3.17m	14'3" x 10'4"
TOTAL AREA	54.8 sq m	590 sq ft

TILLER HOUSE >>> 6TH FLOOR



Views towards
North East London

Views towards the
ExCeL London and
ABP Royal Albert Dock

Views towards the
Gallions Point Marina

Views towards
the River Thames

GALLEY HOUSE >>> 7TH FLOOR

APARTMENT A50

Kitchen/Living/Dining	6.66m x 4.86m	21'10" x 15'11"
Bedroom	4.34m x 3.17m	14'2" x 10'4"
TOTAL AREA	54.1 sq m	582 sq ft

APARTMENT A51

Kitchen/Living/Dining	6.86m x 3.37m	22'6" x 11'0"
Bedroom	4.81m x 3.39m	15'9" x 11'1"
TOTAL AREA	56.8 sq m	611 sq ft

APARTMENT A52

Kitchen/Living/Dining	6.66m x 6.23m	21'10" x 20'5"
Bedroom 1	4.39m x 2.98m	14'4" x 9'9"
Bedroom 2	3.21m x 3.16m	10'6" x 10'4"
TOTAL AREA	84.0 sq m	904 sq ft

APARTMENT A53

Kitchen/Living/Dining	6.66m x 5.42m	21'10" x 17'9"
Bedroom 1	4.81m x 2.75m	15'9" x 9'0"
Bedroom 2	3.21m x 3.11m	10'6" x 10'2"
TOTAL AREA	76.2 sq m	820 sq ft

APARTMENT A54

Kitchen/Living/Dining	6.88m x 5.68m	22'7" x 18'7"
Bedroom 1	6.57m x 3.89m	21'6" x 12'9"
Bedroom 2	4.24m x 3.12m	13'11" x 10'2"
TOTAL AREA	94.3 sq m	1,015 sq ft

Arrows denote where measurements have been taken from. S = Services.

We operate a policy of continuous improvement and individual features such as kitchen and bathroom layouts, doors, windows and elevational treatments may vary from time to time. Consequently these particulars should be treated as general guidance only and do not constitute a contract, part of a contract or a warranty. External finishes, landscaping and configuration may vary. Please refer to Sales Advisor for further details. All dimensions are approximate and should not be used for carpet sizes, appliance spaces or furniture. Furniture not to scale and all positions are indicative.

APARTMENT H42

Kitchen/Living/Dining	6.57m x 4.08m	21'6" x 13'4"
Bedroom	4.05m x 3.12m	13'3" x 10'2"
TOTAL AREA	54.3 sq m	584 sq ft

APARTMENT H43

Kitchen/Living/Dining	6.82m x 6.66m	22'4" x 21'10"
Bedroom 1	4.36m x 2.84m	14'3" x 9'3"
Bedroom 2	3.35m x 3.21m	10'11" x 10'6"
Bedroom 3	2.96m x 2.74m	9'8" x 9'0"
TOTAL AREA	100.3 sq m	1,080 sq ft

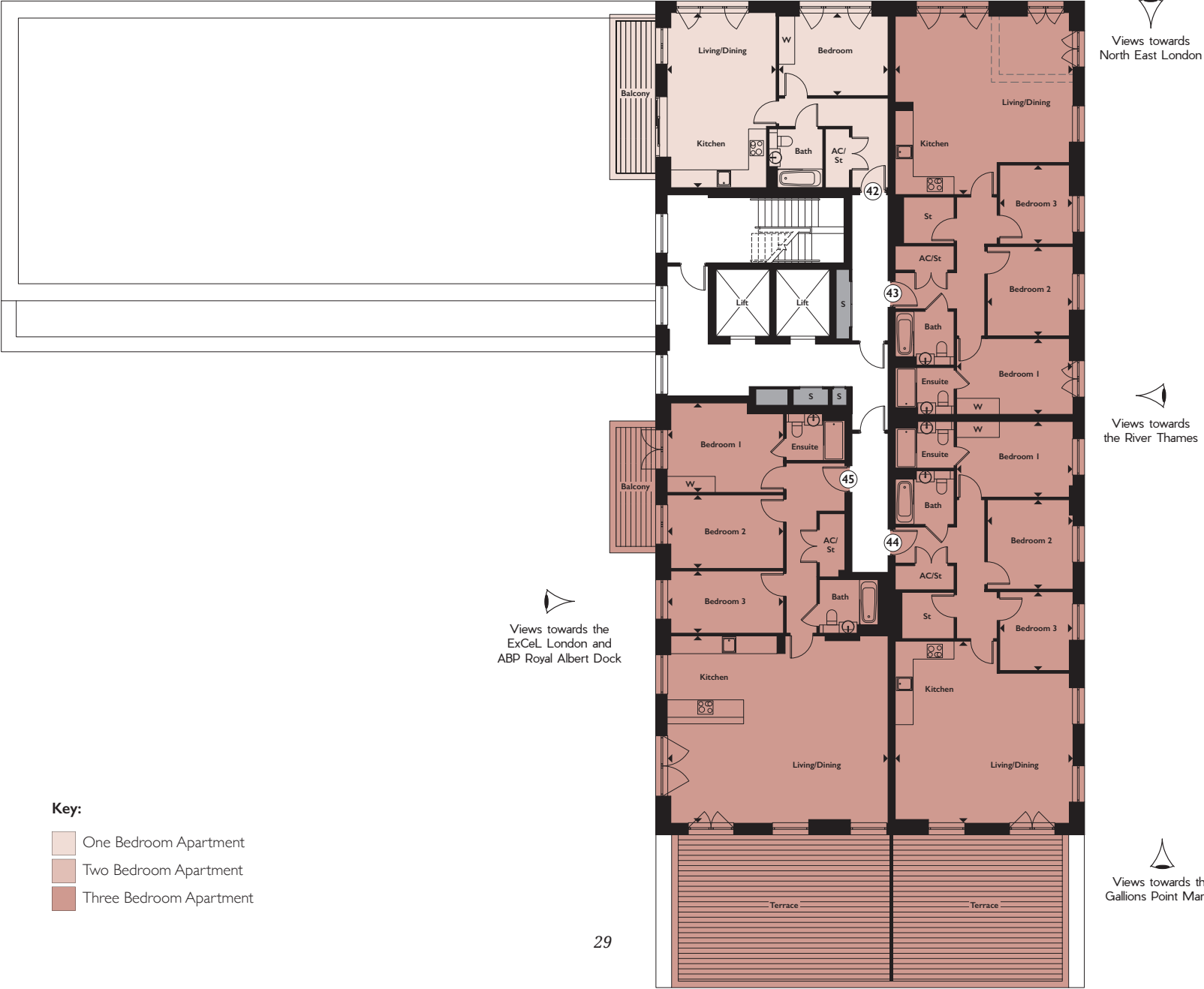
APARTMENT H44

Kitchen/Living/Dining	6.82m x 6.66m	22'4" x 21'10"
Bedroom 1	4.36m x 2.84m	14'3" x 9'3"
Bedroom 2	3.35m x 3.21m	10'11" x 10'6"
Bedroom 3	2.96m x 2.74m	9'8" x 9'0"
TOTAL AREA	100.3 sq m	1,080 sq ft

APARTMENT H45

Kitchen/Living/Dining	8.28m x 7.03m	27'2" x 23'10"
Bedroom 1	4.36m x 3.35m	14'3" x 10'11"
Bedroom 2	4.36m x 2.75m	14'3" x 9'0"
Bedroom 3	4.36m x 2.33m	14'3" x 7'7"
TOTAL AREA	118.2 sq m	1,272 sq ft

TILLER HOUSE >>> 7TH FLOOR





GALLEY HOUSE >>> 8TH FLOOR

APARTMENT A55

Kitchen/Living/Dining	6.66m x 4.86m	21'10" x 15'11"
Bedroom	4.34m x 3.17m	14'2" x 10'4"
TOTAL AREA	54.1 sq m	582 sq ft

APARTMENT A56

Kitchen/Living/Dining	6.86m x 3.37m	22'6" x 11'0"
Bedroom	4.81m x 3.39m	15'9" x 11'1"
TOTAL AREA	56.8 sq m	611 sq ft

APARTMENT A57

Kitchen/Living/Dining	6.66m x 6.23m	21'10" x 20'5"
Bedroom 1	4.39m x 2.98m	14'4" x 9'9"
Bedroom 2	3.21m x 3.16m	10'6" x 10'4"
TOTAL AREA	84.0 sq m	904 sq ft

APARTMENT A58

Kitchen/Living/Dining	6.66m x 5.37m	21'10" x 17'7"
Bedroom	4.36m x 3.16m	14'3" x 10'4"
TOTAL AREA	57.5 sq m	619 sq ft

APARTMENT A59

Kitchen/Living/Dining	6.66m x 5.27m	21'10" x 17'3"
Bedroom	4.36m x 3.16m	14'3" x 10'4"
TOTAL AREA	57.4 sq m	618 sq ft

APARTMENT A60

Kitchen/Living/Dining	6.57m x 4.07m	21'6" x 13'4"
Bedroom	4.11m x 3.12m	13'5" x 10'2"
TOTAL AREA	51.7 sq m	556 sq ft

Arrows denote where measurements have been taken from. S = Services.

We operate a policy of continuous improvement and individual features such as kitchen and bathroom layouts, doors, windows and elevational treatments may vary from time to time. Consequently these particulars should be treated as general guidance only and do not constitute a contract, part of a contract or a warranty. External finishes, landscaping and configuration may vary. Please refer to Sales Advisor for further details. All dimensions are approximate and should not be used for carpet sizes, appliance spaces or furniture. Furniture not to scale and all positions are indicative.

APARTMENT H46

Kitchen/Living/Dining	6.57m x 4.08m	21'6" x 13'4"
Bedroom	4.05m x 3.12m	13'3" x 10'2"
TOTAL AREA	54.3 sq m	584 sq ft

APARTMENT H47

Kitchen/Living/Dining	6.82m x 6.66m	22'4" x 21'10"
Bedroom 1	4.36m x 2.84m	14'3" x 9'3"
Bedroom 2	3.35m x 3.21m	10'11" x 10'6"
Bedroom 3	2.96m x 2.74m	9'8" x 9'0"
TOTAL AREA	100.3 sq m	1,080 sq ft

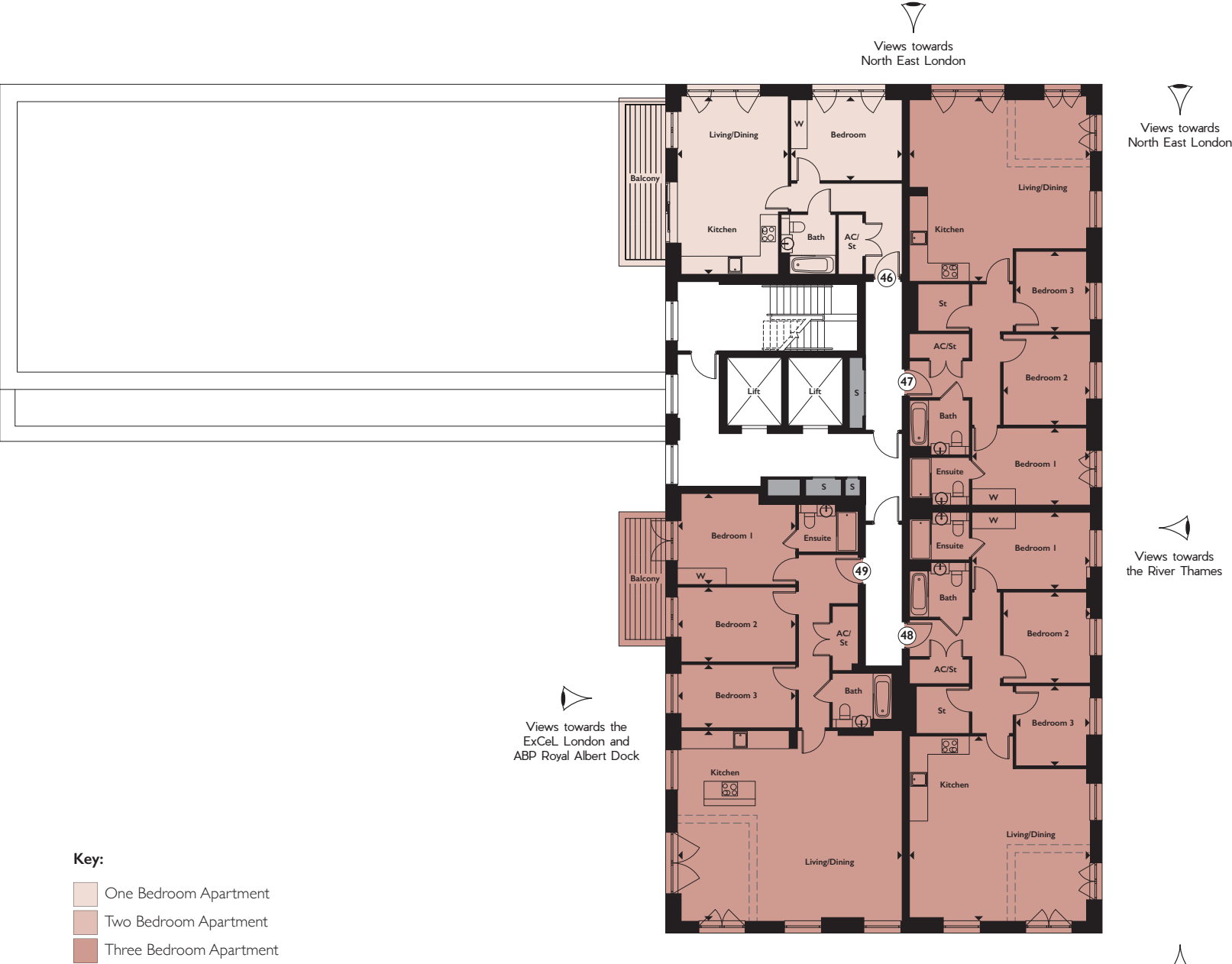
APARTMENT H48

Kitchen/Living/Dining	6.82m x 6.66m	22'4" x 21'10"
Bedroom 1	4.36m x 2.84m	14'3" x 9'3"
Bedroom 2	3.35m x 3.21m	10'11" x 10'6"
Bedroom 3	2.96m x 2.74m	9'8" x 9'0"
TOTAL AREA	100.7 sq m	1,084 sq ft

APARTMENT H49

Kitchen/Living/Dining	8.28m x 7.03m	27'2" x 23'0"
Bedroom 1	4.36m x 3.35m	14'3" x 10'11"
Bedroom 2	4.36m x 2.75m	14'3" x 9'0"
Bedroom 3	4.36m x 2.33m	14'3" x 7'7"
TOTAL AREA	117.8 sq m	1,268 sq ft

TILLER HOUSE >>> 8TH FLOOR





GALLEY HOUSE >>> 9TH FLOOR

APARTMENT A61

Kitchen/Living/Dining	6.66m x 4.86m	21'10" x 15'11"
Bedroom	4.34m x 3.17m	14'2" x 10'4"
TOTAL AREA	54.1 sq m	582 sq ft

APARTMENT A62

Kitchen/Living/Dining	6.86m x 3.37m	22'6" x 11'0"
Bedroom	4.81m x 3.39m	15'9" x 11'1"
TOTAL AREA	56.8 sq m	611 sq ft

APARTMENT A63

Kitchen/Living/Dining	6.66m x 6.23m	21'10" x 20'5"
Bedroom 1	4.39m x 2.98m	14'4" x 9'9"
Bedroom 2	3.21m x 3.16m	10'6" x 10'4"
TOTAL AREA	84.0 sq m	904 sq ft

APARTMENT A64

Kitchen/Living/Dining	6.66m x 5.37m	21'10" x 17'7"
Bedroom	4.36m x 3.16m	14'3" x 10'4"
TOTAL AREA	57.5 sq m	619 sq ft

APARTMENT A65

Kitchen/Living/Dining	6.66m x 5.27m	21'10" x 17'3"
Bedroom	4.36m x 3.16m	14'3" x 10'4"
TOTAL AREA	57.4 sq m	618 sq ft

APARTMENT A66

Kitchen/Living/Dining	6.57m x 4.07m	21'6" x 13'4"
Bedroom	4.11m x 3.12m	13'5" x 10'2"
TOTAL AREA	51.7 sq m	556 sq ft

Arrows denote where measurements have been taken from. S = Services.

We operate a policy of continuous improvement and individual features such as kitchen and bathroom layouts, doors, windows and elevational treatments may vary from time to time. Consequently these particulars should be treated as general guidance only and do not constitute a contract, part of a contract or a warranty. External finishes, landscaping and configuration may vary. Please refer to Sales Advisor for further details. All dimensions are approximate and should not be used for carpet sizes, appliance spaces or furniture. Furniture not to scale and all positions are indicative.

APARTMENT H50

Kitchen/Living/Dining	6.57m x 4.08m	21'6" x 13'4"
Bedroom	4.05m x 3.12m	13'3" x 10'2"
TOTAL AREA	54.3 sq m	584 sq ft

APARTMENT H51

Kitchen/Living/Dining	6.82m x 6.66m	22'4" x 21'10"
Bedroom 1	4.36m x 2.84m	14'3" x 9'3"
Bedroom 2	3.35m x 3.21m	10'11" x 10'6"
Bedroom 3	2.96m x 2.74m	9'8" x 9'0"
TOTAL AREA	100.3 sq m	1,080 sq ft

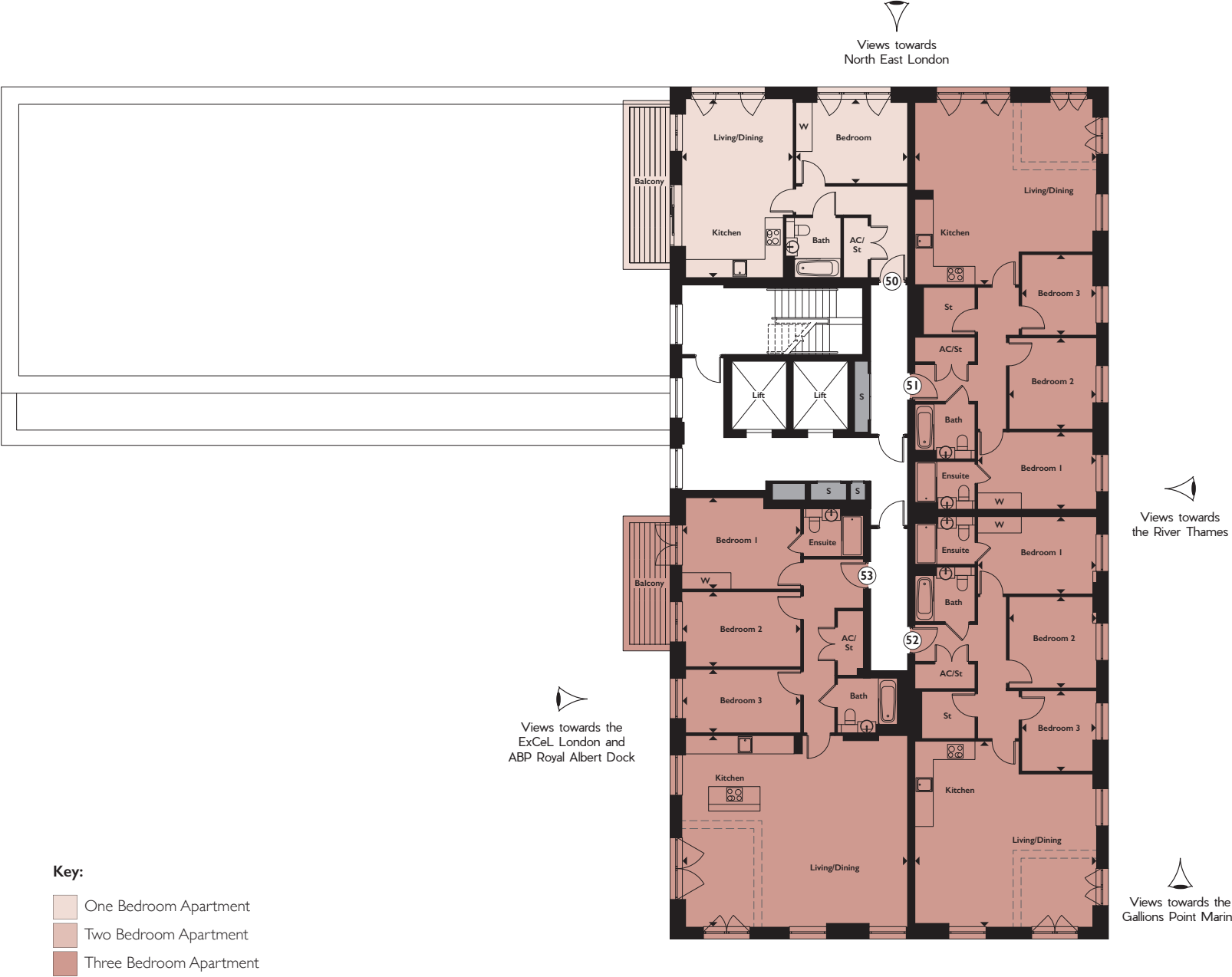
APARTMENT H52

Kitchen/Living/Dining	6.82m x 6.66m	22'4" x 21'10"
Bedroom 1	4.36m x 2.86m	14'3" x 9'3"
Bedroom 2	3.35m x 3.21m	10'11" x 10'6"
Bedroom 3	2.96m x 2.74m	9'8" x 9'0"
TOTAL AREA	100.7 sq m	1,084 sq ft

APARTMENT H53

Kitchen/Living/Dining	8.28m x 7.03m	27'2" x 23'0"
Bedroom 1	4.36m x 3.35m	14'3" x 10'11"
Bedroom 2	4.36m x 2.75m	14'3" x 9'0"
Bedroom 3	4.36m x 2.33m	14'3" x 7'7"
TOTAL AREA	117.8 sq m	1,268 sq ft

TILLER HOUSE 9TH FLOOR





GALLEY HOUSE >>> 10TH FLOOR

APARTMENT A67

Kitchen/Living/Dining	6.66m x 4.86m	21'10" x 15'11"
Bedroom	4.34m x 3.17m	14'2" x 10'4"
TOTAL AREA	54.1 sq m	582 sq ft

APARTMENT A70

Kitchen/Living/Dining	6.66m x 5.37m	21'10" x 17'7"
Bedroom	4.36m x 3.16m	14'3" x 10'4"
TOTAL AREA	57.5 sq m	619 sq ft

APARTMENT A68

Kitchen/Living/Dining	6.86m x 3.37m	22'6" x 11'0"
Bedroom	4.81m x 3.39m	15'9" x 11'1"
TOTAL AREA	56.8 sq m	611 sq ft

APARTMENT A71

Kitchen/Living/Dining	6.66m x 5.27m	21'10" x 17'3"
Bedroom	4.36m x 3.16m	14'3" x 10'4"
TOTAL AREA	57.4 sq m	618 sq ft

APARTMENT A69

Kitchen/Living/Dining	6.66m x 6.23m	21'10" x 20'5"
Bedroom 1	4.39m x 2.98m	14'4" x 9'9"
Bedroom 2	3.21m x 3.16m	10'6" x 10'4"
TOTAL AREA	84.0 sq m	904 sq ft

APARTMENT A72

Kitchen/Living/Dining	6.57m x 4.07m	21'6" x 13'4"
Bedroom	4.11m x 3.12m	13'5" x 10'2"
TOTAL AREA	51.7 sq m	556 sq ft

Arrows denote where measurements have been taken from. S = Services.

We operate a policy of continuous improvement and individual features such as kitchen and bathroom layouts, doors, windows and elevational treatments may vary from time to time. Consequently these particulars should be treated as general guidance only and do not constitute a contract, part of a contract or a warranty. External finishes, landscaping and configuration may vary. Please refer to Sales Advisor for further details. All dimensions are approximate and should not be used for carpet sizes, appliance spaces or furniture. Furniture not to scale and all positions are indicative.

APARTMENT H54

Kitchen/Living/Dining	6.57m x 4.08m	21'6" x 13'4"
Bedroom	4.05m x 3.12m	13'3" x 10'2"
TOTAL AREA	54.3 sq m	584 sq ft

APARTMENT H55

Kitchen/Living/Dining	6.82m x 6.66m	22'4" x 21'10"
Bedroom 1	4.36m x 2.84m	14'3" x 9'3"
Bedroom 2	3.35m x 3.21m	10'11" x 10'6"
Bedroom 3	2.96m x 2.74m	9'8" x 9'0"
TOTAL AREA	100.3 sq m	1,080 sq ft

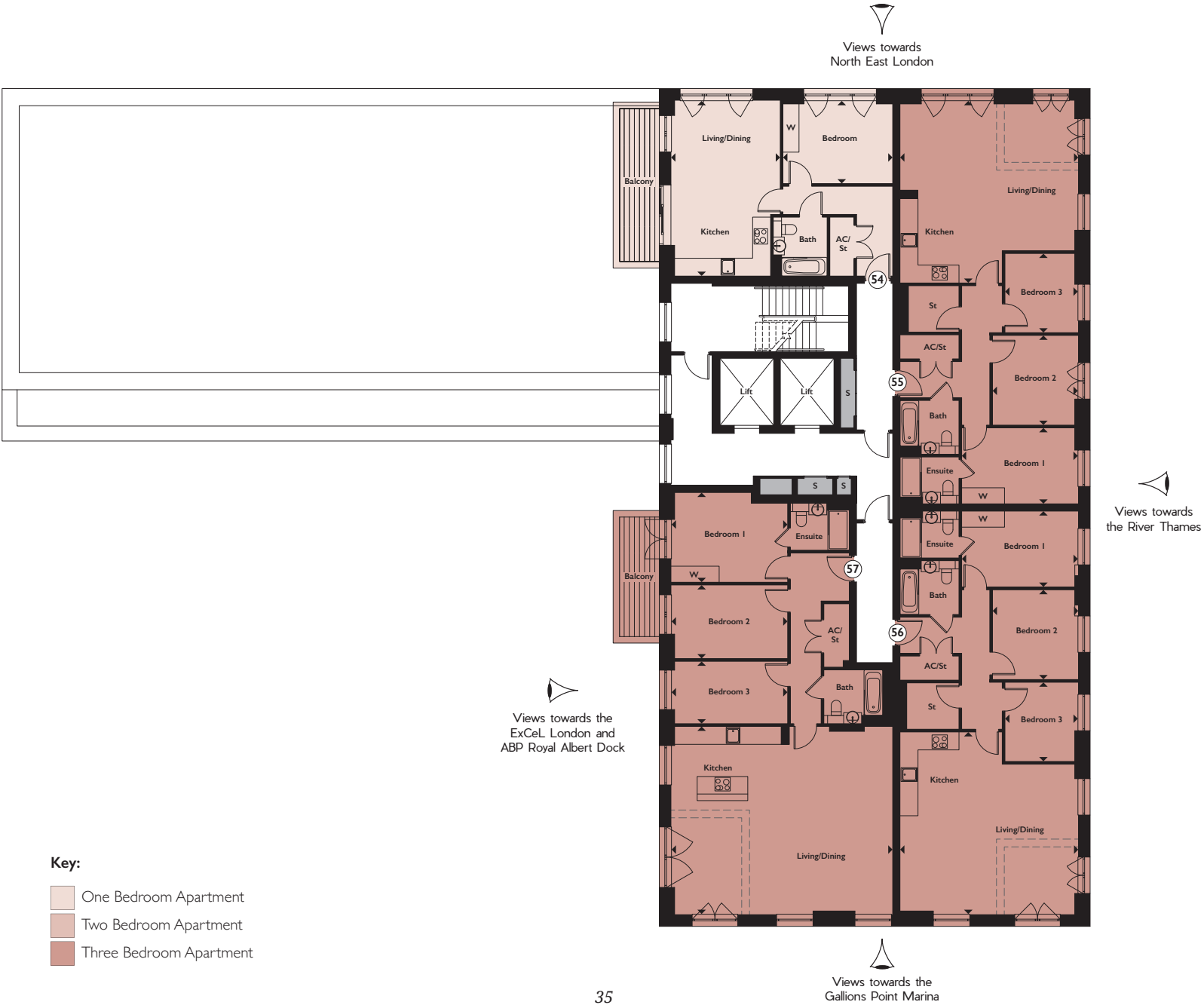
APARTMENT H56

Kitchen/Living/Dining	6.82m x 6.66m	22'4" x 21'10"
Bedroom 1	4.36m x 2.84m	14'3" x 9'3"
Bedroom 2	3.35m x 3.21m	10'11" x 10'6"
Bedroom 3	2.96m x 2.74m	9'8" x 9'0"
TOTAL AREA	100.7 sq m	1,084 sq ft

APARTMENT H57

Kitchen/Living/Dining	8.28m x 7.03m	27'2" x 23'0"
Bedroom 1	4.36m x 3.35m	14'3" x 10'11"
Bedroom 2	4.36m x 2.75m	14'3" x 9'0"
Bedroom 3	4.36m x 2.33m	14'3" x 7'7"
TOTAL AREA	117.8 sq m	1,268 sq ft

TILLER HOUSE >>> 10TH FLOOR





GALLEY HOUSE >>> 11TH FLOOR

APARTMENT A73

Kitchen/Living/Dining	8.28m x 6.84m	27'2" x 22'5"
Bedroom 1	4.36m x 2.84m	14'3" x 9'3"
Bedroom 2	3.77m x 3.19m	12'4" x 10'5"
Bedroom 3	3.19m x 2.53m	10'5" x 8'3"
TOTAL AREA	112.8 sq m	1,214 sq ft

APARTMENT A74

Kitchen/Living/Dining	6.66m x 6.23m	21'10" x 20'5"
Bedroom 1	4.39m x 2.98m	14'4" x 9'9"
Bedroom 2	3.21m x 3.16m	10'6" x 10'4"
TOTAL AREA	84.0 sq m	904 sq ft

APARTMENT A75

Kitchen/Living/Dining	6.66m x 5.37m	21'10" x 17'7"
Bedroom	4.36m x 3.16m	14'3" x 10'4"
TOTAL AREA	57.5 sq m	619 sq ft

APARTMENT A76

Kitchen/Living/Dining	6.66m x 5.27m	21'10" x 17'3"
Bedroom	4.36m x 3.16m	14'3" x 10'4"
TOTAL AREA	57.4 sq m	618 sq ft

APARTMENT A77

Kitchen/Living/Dining	6.57m x 4.07m	21'6" x 13'4"
Bedroom	4.11m x 3.12m	13'5" x 10'2"
TOTAL AREA	51.7 sq m	556 sq ft

Arrows denote where measurements have been taken from. S = Services.

We operate a policy of continuous improvement and individual features such as kitchen and bathroom layouts, doors, windows and elevational treatments may vary from time to time. Consequently these particulars should be treated as general guidance only and do not constitute a contract, part of a contract or a warranty. External finishes, landscaping and configuration may vary. Please refer to Sales Advisor for further details. All dimensions are approximate and should not be used for carpet sizes, appliance spaces or furniture. Furniture not to scale and all positions are indicative.

APARTMENT H58

Kitchen/Living/Dining	6.57m x 4.08m	21'6" x 13'4"
Bedroom	4.05m x 3.12m	13'3" x 10'2"
TOTAL AREA	54.3 sq m	584 sq ft

APARTMENT H59

Kitchen/Living/Dining	6.82m x 6.66m	22'4" x 21'10"
Bedroom 1	4.36m x 2.84m	14'3" x 9'3"
Bedroom 2	3.35m x 3.21m	10'11" x 10'6"
Bedroom 3	2.96m x 2.74m	9'8" x 9'0"
TOTAL AREA	100.3 sq m	1,080 sq ft

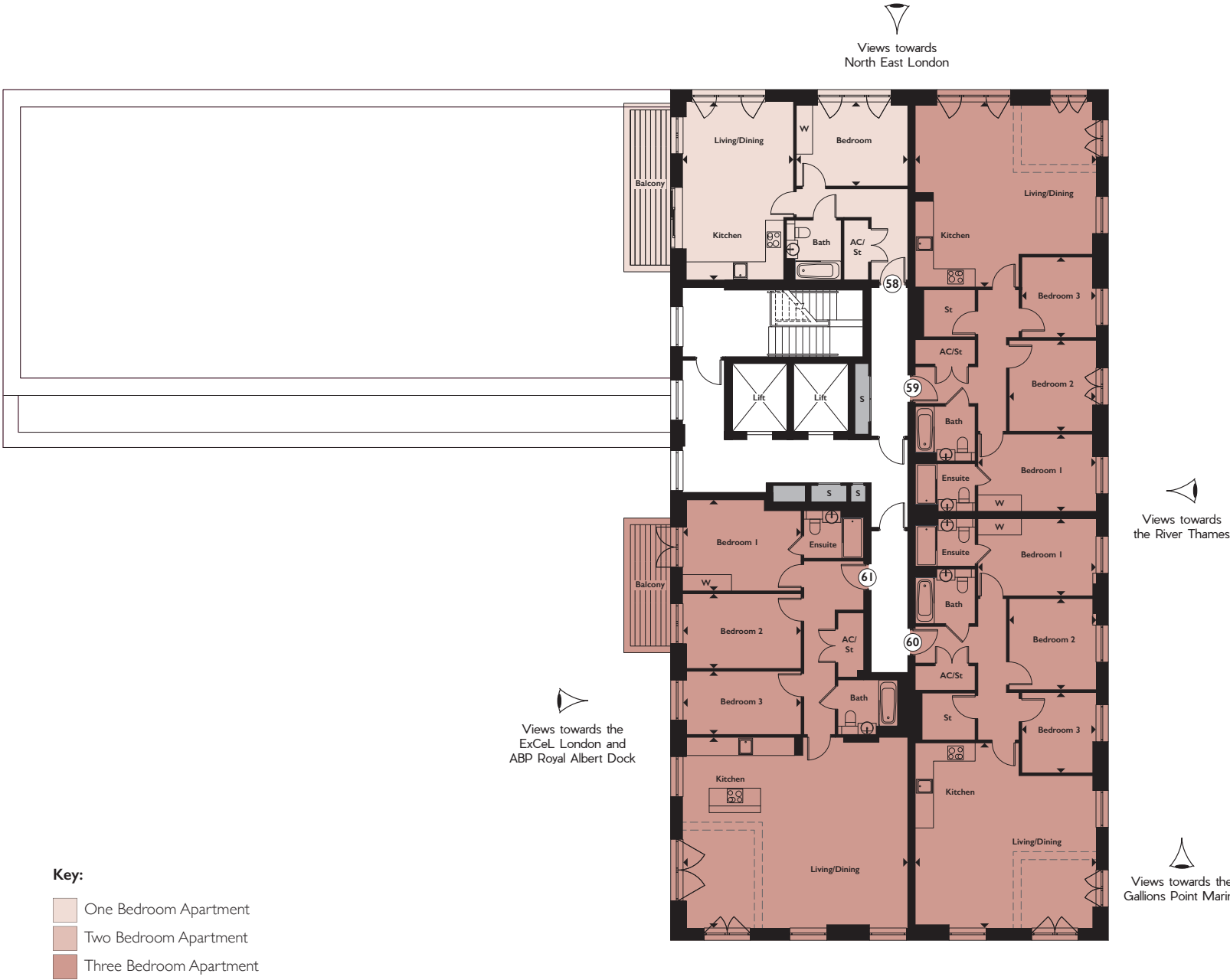
APARTMENT H60

Kitchen/Living/Dining	6.82m x 6.66m	22'4" x 21'10"
Bedroom 1	4.36m x 2.84m	14'3" x 9'3"
Bedroom 2	3.35m x 3.21m	10'11" x 10'6"
Bedroom 3	2.96m x 2.74m	9'8" x 9'0"
TOTAL AREA	100.7 sq m	1,084 sq ft

APARTMENT H61

Kitchen/Living/Dining	8.28m x 7.03m	27'2" x 23'0"
Bedroom 1	4.36m x 3.35m	14'3" x 10'11"
Bedroom 2	4.36m x 2.75m	14'3" x 9'0"
Bedroom 3	4.36m x 2.33m	14'3" x 7'7"
TOTAL AREA	117.8 sq m	1,268 sq ft

TILLER HOUSE >>> 11TH FLOOR





**24 HOUR
CONCIERGE**



**RESIDENTS'
LANDSCAPED
COURTYARDS**

BACK HOME

I N S T Y L E

At Gallions Point you'll enjoy a 24 hour concierge service, meaning you will always receive a warm welcome at any time of day or night. You can also relax in the reception area, residents' lounge or entertain guests in the spacious surroundings.





**RESIDENTS'
LOUNGE***



**SUPERB
CONNECTIVITY**



**CAR PARKING
AVAILABLE****



*Note to residents - the Residents' Lounge will not be available upon first occupation. **At an additional cost.





SPECIFICATION

IN DETAIL



Computer generated images of a typical kitchen, living room and bathroom at Gallions Point are indicative only.



Living Rooms *Elegant and stylish*

Living rooms are sleek and minimalist, providing you with the perfect canvas to show off your style. Some offer balconies where you can relax on summer evenings and you can choose from many apartments that offer breathtaking views over the Royal Docks and beyond.



Bathrooms *Contemporary and chic*

Your bathroom will have a fully modern white suite with chrome fittings. Details such as heated towel warmers and large vanity mirrors add a sense of luxury, while bespoke cabinets give you practical storage.

**Bedrooms**

Designed for relaxation

Bedrooms are light and airy, with some benefitting from French doors opening onto a balcony. Master bedrooms in larger apartments also offer convenient, modern ensuite facilities.

Computer generated image of a typical interior at Gallions Point is indicative only.

QUALITY IS IN THE DETAIL

GENERAL FEATURES

24 hour concierge service

Underfloor heating

Basement bicycle storage

Private residents' Lounge

Car parking available by separate negotiation

KITCHENS

High-gloss white, handle-less fitted units from London designer Urban Myth

Stone worktops

Fully integrated Smeg appliances: stainless steel oven, ceramic hob, extractor hood, dishwasher, fridge/freezer & washer/dryer

Glass splash-backs

Feature lighting under wall units

BATH & ENSUITE SHOWER ROOMS

Pure white bathroom suites with chrome taps and mixers

Bath with overhead rain shower and glazed screen (where applicable)

Large shower enclosure to ensuite/shower rooms

Contemporary porcelain & ceramic tiling

Large vanity mirror

Towel warmer

Bespoke cabinetry with built in storage and low voltage socket

FLOORING

Kitchen, living room & hallway in woodstrip laminate flooring

DÉCOR

Smooth finish to all walls & ceilings, painted in white emulsion

White satinwood finish to doors & woodwork

FIXTURES & FITTINGS

Full height entrance & internal doors

Fitted wardrobe to main bedroom

Satin chrome door handles

Recessed downlights to kitchen, living room & bathrooms

SkyQ, TV and telephone outlets to living room, with TV outlets to all bedrooms

SECURITY & WARRANTIES

Video entryphone system to all apartments

Monitored CCTV system

10 year NHBC warranty

Two year 24/7 emergency cover

Comprehensive induction with dedicated Customer Service Manager

Specification details are correct at time of going to print but are for guidance only and remain subject to change. Exact fittings and finishes are subject to availability at time of installation.

99% OF CUSTOMERS SURVEYED WOULD RECOMMEND US

UNRIVALLED CUSTOMER SERVICE

THE TELFORD HOMES BRAND DELIVERS HIGH QUALITY, HIGHLY DESIRABLE NEW HOMES THAT ARE SUPPORTED BY FIRST-CLASS CUSTOMER SERVICE.

Telford Homes is a leading London-focused residential property developer. The company specialises in creating, designing and building innovative landmark developments in some of the most desirable and sought after locations in the capital. The emphasis of a Telford Homes project is always focused foremost upon quality, luxury and exclusivity. A high specification, combined with some of the finest designer names, ensures that each individual property meets or exceeds the most demanding expectations. Architectural innovation and excellence ensures a true landmark development, while a fresh and imaginative approach to communal areas further ensures a truly luxurious lifestyle experience. That is why 99% of customers surveyed in 2018* would recommend Telford Homes to their friends and family.



A development by:



Tel: +44 (0)1992 809800

www.telfordhomes.london

Telford Homes

Telford House, Queensgate, Britannia Road, Waltham Cross, Herts EN8 7TF.

These particulars are for illustration only. We operate a policy of continuous improvement and individual features such as kitchen and bathroom layouts, doors, windows and elevational treatments may vary from time to time. Specification details are for guide purposes only and remain subject to change without prior notice. Should a replacement be required this will be to an equal or higher standard. Consequently these particulars should be treated as general guidance only and cannot be relied upon as accurately describing any of the Specified Matters prescribed by any order made under the Property Misdescriptions Act 1991. Nor do they constitute a contract, part of a contract or a warranty. Gallions Point is a marketing name and may not form part of the final postal address. Computer generated images are indicative only and may be subject to change. Details correct at time of going to print E and OE. *This survey is carried out by in-house research, an independent market research company who interview our buyers six weeks after legal completion.

A JOINT VENTURE BETWEEN
TELFORD HOMES AND NOTTING HILL GENESIS

WWW.TELFORDHOMES.LONDON