

# FLOORPLANS

BOW  
GARDEN  
SQUARE

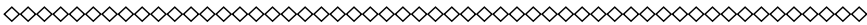
*London E3*





# BOW

*Introducing Bow Garden Square, a truly eye-catching collection of 1 bedroom suites, 1, 2 and 3 bedroom apartments and sky villas in the heart of London’s historic East End. From picturesque canals and parks to quirky cafés and restaurants nearby, these new homes are only a short walk to Mile End tube and Devons Road DLR stations, giving you fast and convenient connections across London, including to the City, Stratford and Canary Wharf.*



# CITY LIVING

WITH A  
*greener aspect*

*Overlooking the green space of the new school, these stylish new homes give a true sense of community while providing the latest in contemporary living.*

*Each apartment or sky villa has its own balcony or terrace, offering a private space to enjoy in the sunnier months, and the design ensures each apartment enjoys plenty of natural light.*

*At Bow Garden Square we are confident we have the perfect home for you.*

# BOW GARDEN SQUARE

*London E3*

BARTLETT  
PARK

THE O2

THE RIVER THAMES

CANARY WHARF



Aerial photograph of East London with computer generated image of Bow Garden Square highlighted.

# DEVELOPMENT LAYOUT

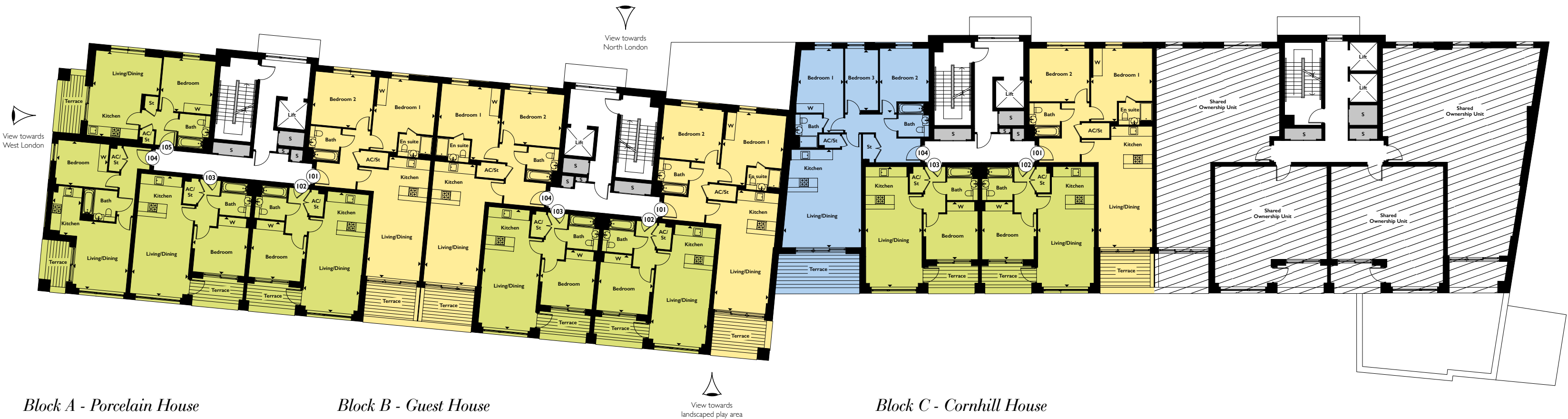
- Key:
- Block A - Porcelain House
  - Block B - Guest House
  - Block C - Cornhill House
  - Block D - Duesbury House



Development layout not to scale, for indication only.  
Proposed landscaping subject to final design clearance and delivery of future residential.

1ST FLOOR

1ST FLOOR



Block A - Porcelain House

APARTMENT 101

Kitchen/Living/Dining	7.90m x 4.60m	25'11" x 15'1"
Bedroom 1	4.77m x 3.99m	15'8" x 13'1"
Bedroom 2	3.91m x 3.47m	12'10" x 11'5"
Total Area	78.3 sq m	843 sq ft

APARTMENT 102

Kitchen/Living/Dining	7.86m x 3.68m	25'9" x 12'1"
Bedroom	3.76m x 3.55m	12'4" x 11'8"
Total Area	51.0 sq m	549 sq ft

APARTMENT 103

Kitchen/Living/Dining	7.86m x 3.68m	25'9" x 12'1"
Bedroom	3.76m x 3.55m	12'4" x 11'8"
Total Area	51.0 sq m	549 sq ft

APARTMENT 104

Kitchen	3.16m x 1.87m	10'4" x 6'2"
Living/Dining	4.43m x 3.51m	14'6" x 11'6"
Bedroom	4.17m x 2.89m	13'8" x 9'6"
Total Area	45.3 sq m	488 sq ft

APARTMENT 105

Kitchen/Living/Dining	5.49m x 4.34m	18'0" x 14'3"
Bedroom	3.48m x 3.41m	11'5" x 11'2"
Total Area	44.8 sq m	482 sq ft

Block B - Guest House

APARTMENT 101

Kitchen/Living/Dining	7.90m x 4.60m	25'11" x 15'1"
Bedroom 1	4.77m x 3.99m	15'8" x 13'1"
Bedroom 2	3.91m x 3.47m	12'10" x 11'5"
Total Area	78.3 sq m	843 sq ft

APARTMENT 102

Kitchen/Living/Dining	7.86m x 3.68m	25'9" x 12'1"
Bedroom	3.76m x 3.55m	12'4" x 11'8"
Total Area	51.0 sq m	549 sq ft

APARTMENT 103

Kitchen/Living/Dining	7.86m x 3.68m	25'9" x 12'1"
Bedroom	3.76m x 3.55m	12'4" x 11'8"
Total Area	51.0 sq m	549 sq ft

APARTMENT 104

Kitchen/Living/Dining	7.90m x 4.60m	25'11" x 15'1"
Bedroom 1	4.77m x 3.99m	15'8" x 13'1"
Bedroom 2	3.91m x 3.47m	12'10" x 11'5"
Total Area	78.3 sq m	843 sq ft

Block C - Cornhill House

APARTMENT 101

Kitchen/Living/Dining	7.90m x 4.60m	25'11" x 15'1"
Bedroom 1	4.77m x 3.99m	15'8" x 13'1"
Bedroom 2	3.91m x 3.47m	12'10" x 11'5"
Total Area	78.3 sq m	843 sq ft

APARTMENT 102

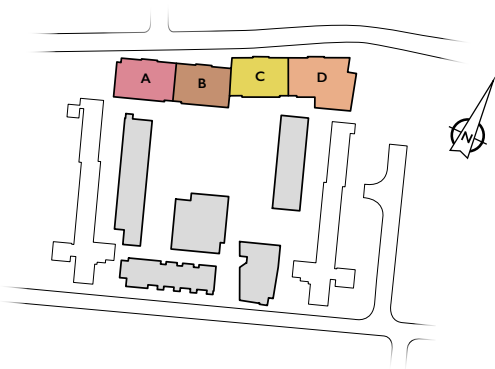
Kitchen/Living/Dining	7.86m x 3.68m	25'9" x 12'1"
Bedroom	3.76m x 3.55m	12'4" x 11'8"
Total Area	51.0 sq m	549 sq ft

APARTMENT 103

Kitchen/Living/Dining	7.86m x 3.68m	25'9" x 12'1"
Bedroom	3.76m x 3.55m	12'4" x 11'8"
Total Area	51.0 sq m	549 sq ft

APARTMENT 104

Kitchen/Living/Dining	7.40m x 5.17m	24'3" x 17'0"
Bedroom 1	5.50m x 3.15m	18'1" x 10'4"
Bedroom 2	4.20m x 3.21m	13'9" x 10'6"
Bedroom 3	4.20m x 2.17m	13'9" x 7'1"
Total Area	90.8 sq m	977 sq ft



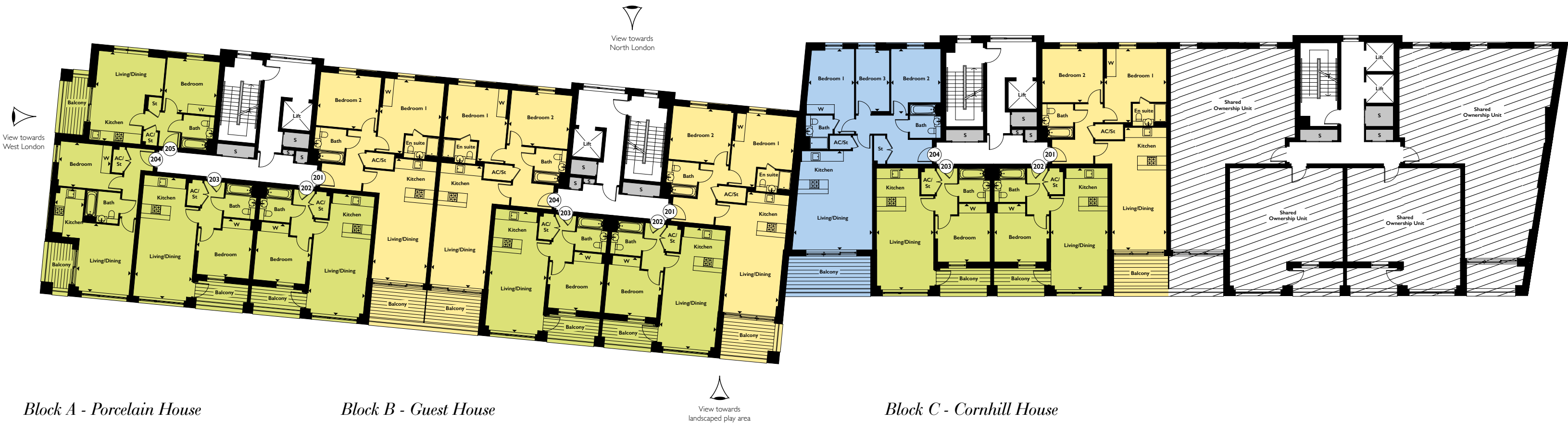
- Key:
- One Bedroom Apartment
  - Two Bedroom Apartment
  - Three Bedroom Apartment

Arrows denote where measurements have been taken from. S = Services.

We operate a policy of continuous improvement and individual features such as kitchen and bathroom layouts, doors, windows and elevational treatments may vary from time to time. Consequently these particulars should be treated as general guidance only and do not constitute a contract, part of a contract or a warranty. External finishes, landscaping and configuration may vary. Please refer to Sales Advisor for further details. All dimensions are approximate and should not be used for carpet sizes, appliance spaces or furniture. Furniture not to scale and all positions are indicative.

2ND FLOOR

2ND FLOOR



Block A - Porcelain House

APARTMENT 201

Kitchen/Living/Dining	7.90m x 4.60m	25'11" x 15'1"
Bedroom 1	4.77m x 3.99m	15'8" x 13'1"
Bedroom 2	3.91m x 3.47m	12'10" x 11'5"
Total Area	78.3 sq m	843 sq ft

APARTMENT 202

Kitchen/Living/Dining	7.86m x 3.68m	25'9" x 12'1"
Bedroom	3.76m x 3.55m	12'4" x 11'8"
Total Area	51.0 sq m	549 sq ft

APARTMENT 203

Kitchen/Living/Dining	7.86m x 3.68m	25'9" x 12'1"
Bedroom	3.76m x 3.55m	12'4" x 11'8"
Total Area	51.0 sq m	549 sq ft

APARTMENT 204

Kitchen	3.16m x 1.87m	10'4" x 6'2"
Living/Dining	4.43m x 3.51m	14'6" x 11'6"
Bedroom	4.17m x 2.89m	13'8" x 9'6"
Total Area	45.3 sq m	488 sq ft

APARTMENT 205

Kitchen/Living/Dining	5.78m x 4.34m	19'0" x 14'3"
Bedroom	3.48m x 3.41m	11'5" x 11'2"
Total Area	45.7 sq m	492 sq ft

Block B - Guest House

APARTMENT 201

Kitchen/Living/Dining	7.90m x 4.60m	25'11" x 15'1"
Bedroom 1	4.77m x 3.99m	15'8" x 13'1"
Bedroom 2	3.91m x 3.47m	12'10" x 11'5"
Total Area	78.3 sq m	843 sq ft

APARTMENT 202

Kitchen/Living/Dining	7.86m x 3.68m	25'9" x 12'1"
Bedroom	3.76m x 3.55m	12'4" x 11'8"
Total Area	51.0 sq m	549 sq ft

APARTMENT 203

Kitchen/Living/Dining	7.86m x 3.68m	25'9" x 12'1"
Bedroom	3.76m x 3.55m	12'4" x 11'8"
Total Area	51.0 sq m	549 sq ft

APARTMENT 204

Kitchen/Living/Dining	7.90m x 4.60m	25'11" x 15'1"
Bedroom 1	4.77m x 3.99m	15'8" x 13'1"
Bedroom 2	3.91m x 3.47m	12'10" x 11'5"
Total Area	78.3 sq m	843 sq ft

Block C - Cornhill House

APARTMENT 201

Kitchen/Living/Dining	7.90m x 4.60m	25'11" x 15'1"
Bedroom 1	4.77m x 3.99m	15'8" x 13'1"
Bedroom 2	3.91m x 3.47m	12'10" x 11'5"
Total Area	78.3 sq m	843 sq ft

APARTMENT 202

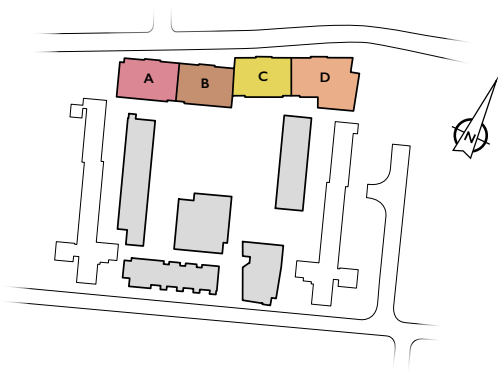
Kitchen/Living/Dining	7.86m x 3.68m	25'9" x 12'1"
Bedroom	3.76m x 3.55m	12'4" x 11'8"
Total Area	51.0 sq m	549 sq ft

APARTMENT 203

Kitchen/Living/Dining	7.86m x 3.68m	25'9" x 12'1"
Bedroom	3.76m x 3.55m	12'4" x 11'8"
Total Area	51.0 sq m	549 sq ft

APARTMENT 204

Kitchen/Living/Dining	7.40m x 5.17m	24'3" x 17'0"
Bedroom 1	5.50m x 3.15m	18'1" x 10'4"
Bedroom 2	4.20m x 3.21m	13'9" x 10'6"
Bedroom 3	4.20m x 2.17m	13'9" x 7'1"
Total Area	90.8 sq m	977 sq ft



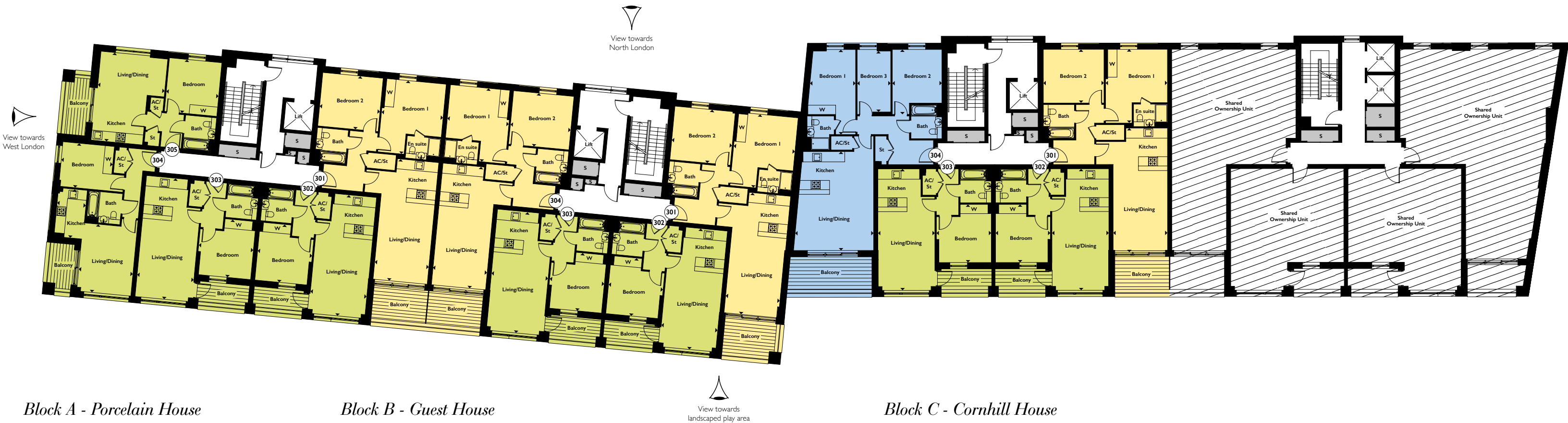
- Key:
- One Bedroom Apartment
  - Two Bedroom Apartment
  - Three Bedroom Apartment

Arrows denote where measurements have been taken from. S = Services.

We operate a policy of continuous improvement and individual features such as kitchen and bathroom layouts, doors, windows and elevational treatments may vary from time to time. Consequently these particulars should be treated as general guidance only and do not constitute a contract, part of a contract or a warranty. External finishes, landscaping and configuration may vary. Please refer to Sales Advisor for further details. All dimensions are approximate and should not be used for carpet sizes, appliance spaces or furniture. Furniture not to scale and all positions are indicative.

3RD FLOOR

3RD FLOOR



Block A - Porcelain House

APARTMENT 301

Kitchen/Living/Dining	7.90m x 4.60m	25'11" x 15'1"
Bedroom 1	4.77m x 3.99m	15'8" x 13'1"
Bedroom 2	3.91m x 3.47m	12'10" x 11'5"
Total Area	78.3 sq m	843 sq ft

APARTMENT 302

Kitchen/Living/Dining	7.86m x 3.68m	25'9" x 12'1"
Bedroom	3.76m x 3.55m	12'4" x 11'8"
Total Area	51.0 sq m	549 sq ft

APARTMENT 303

Kitchen/Living/Dining	7.86m x 3.68m	25'9" x 12'1"
Bedroom	3.76m x 3.55m	12'4" x 11'8"
Total Area	51.0 sq m	549 sq ft

APARTMENT 304

Kitchen	3.16m x 1.87m	10'4" x 6'2"
Living/Dining	4.43m x 3.51m	14'6" x 11'6"
Bedroom	4.17m x 2.89m	13'8" x 9'6"
Total Area	45.3 sq m	488 sq ft

APARTMENT 305

Kitchen/Living/Dining	5.78m x 4.34m	19'0" x 14'3"
Bedroom	3.48m x 3.41m	11'5" x 11'2"
Total Area	45.7 sq m	492 sq ft

Block B - Guest House

APARTMENT 301

Kitchen/Living/Dining	7.90m x 4.60m	25'11" x 15'1"
Bedroom 1	4.77m x 3.99m	15'8" x 13'1"
Bedroom 2	3.91m x 3.47m	12'10" x 11'5"
Total Area	78.3 sq m	843 sq ft

APARTMENT 302

Kitchen/Living/Dining	7.86m x 3.68m	25'9" x 12'1"
Bedroom	3.76m x 3.55m	12'4" x 11'8"
Total Area	51.0 sq m	549 Sq ft

APARTMENT 303

Kitchen/Living/Dining	7.86m x 3.68m	25'9" x 12'1"
Bedroom	3.76m x 3.55m	12'4" x 11'8"
Total Area	51.0 sq m	549 sq ft

APARTMENT 304

Kitchen/Living/Dining	7.90m x 4.60m	25'11" x 15'1"
Bedroom 1	4.77m x 3.99m	15'8" x 13'1"
Bedroom 2	3.91m x 3.47m	12'10" x 11'5"
Total Area	78.3 sq m	843 sq ft

Block C - Cornhill House

APARTMENT 301

Kitchen/Living/Dining	7.90m x 4.60m	25'11" x 15'1"
Bedroom 1	4.77m x 3.99m	15'8" x 13'1"
Bedroom 2	3.91m x 3.47m	12'10" x 11'5"
Total Area	78.3 sq m	843 sq ft

APARTMENT 302

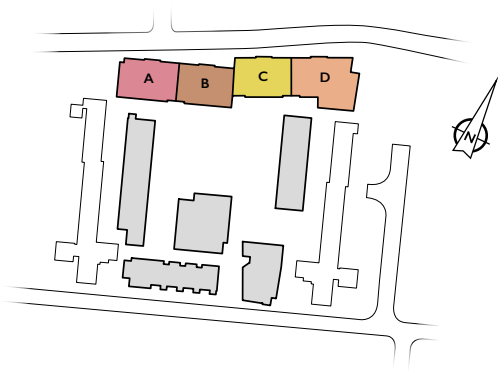
Kitchen/Living/Dining	7.86m x 3.68m	25'9" x 12'1"
Bedroom	3.76m x 3.55m	12'4" x 11'8"
Total Area	51.0 sq m	549 sq ft

APARTMENT 303

Kitchen/Living/Dining	7.86m x 3.68m	25'9" x 12'1"
Bedroom	3.76m x 3.55m	12'4" x 11'8"
Total Area	51.0 sq m	549 sq ft

APARTMENT 304

Kitchen/Living/Dining	7.40m x 5.17m	24'3" x 17'0"
Bedroom 1	5.50m x 3.15m	18'1" x 10'4"
Bedroom 2	4.20m x 3.21m	13'9" x 10'6"
Bedroom 3	4.20m x 2.17m	13'9" x 7'1"
Total Area	90.8 sq m	977 sq ft



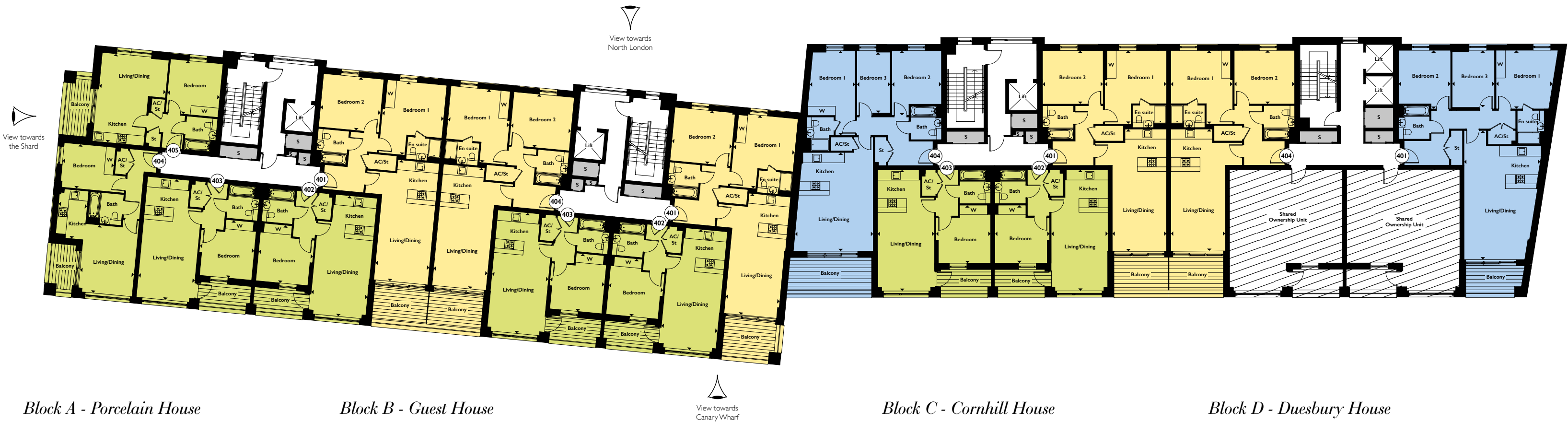
- Key:
- One Bedroom Apartment
  - Two Bedroom Apartment
  - Three Bedroom Apartment

Arrows denote where measurements have been taken from. S = Services.

We operate a policy of continuous improvement and individual features such as kitchen and bathroom layouts, doors, windows and elevational treatments may vary from time to time. Consequently these particulars should be treated as general guidance only and do not constitute a contract, part of a contract or a warranty. External finishes, landscaping and configuration may vary. Please refer to Sales Advisor for further details. All dimensions are approximate and should not be used for carpet sizes, appliance spaces or furniture. Furniture not to scale and all positions are indicative.

4TH FLOOR

4TH FLOOR



Block A - Porcelain House

APARTMENT 401

Kitchen/Living/Dining	7.90m x 4.60m	25'11" x 15'1"
Bedroom 1	4.77m x 3.99m	15'8" x 13'1"
Bedroom 2	3.91m x 3.47m	12'10" x 11'5"
Total Area	78.3 sq m	843 sq ft

APARTMENT 402

Kitchen/Living/Dining	7.86m x 3.68m	25'9" x 12'1"
Bedroom	3.76m x 3.55m	12'4" x 11'8"
Total Area	51.0 sq m	549 sq ft

APARTMENT 403

Kitchen/Living/Dining	7.86m x 3.68m	25'9" x 12'1"
Bedroom	3.76m x 3.55m	12'4" x 11'8"
Total Area	51.0 sq m	549 sq ft

APARTMENT 404

Kitchen	3.16m x 1.87m	10'4" x 6'2"
Living/Dining	4.43m x 3.51m	14'6" x 11'6"
Bedroom	4.17m x 2.89m	13'8" x 9'6"
Total Area	45.3 sq m	492 sq ft

APARTMENT 405

Kitchen/Living/Dining	5.78m x 4.34m	19'0" x 14'3"
Bedroom	3.48m x 3.41m	11'5" x 11'2"
Total Area	45.7 sq m	492 sq ft

Block B - Guest House

APARTMENT 401

Kitchen/Living/Dining	7.90m x 4.60m	25'11" x 15'1"
Bedroom 1	4.77m x 3.99m	15'8" x 13'1"
Bedroom 2	3.91m x 3.47m	12'10" x 11'5"
Total Area	78.3 sq m	843 sq ft

APARTMENT 402

Kitchen/Living/Dining	7.86m x 3.68m	25'9" x 12'1"
Bedroom	3.76m x 3.55m	12'4" x 11'8"
Total Area	51.0 sq m	549 sq ft

APARTMENT 403

Kitchen/Living/Dining	7.86m x 3.68m	25'9" x 12'1"
Bedroom	3.76m x 3.55m	12'4" x 11'8"
Total Area	51.0 sq m	549 sq ft

APARTMENT 404

Kitchen/Living/Dining	7.90m x 4.60m	25'11" x 15'1"
Bedroom 1	4.77m x 3.99m	15'8" x 13'1"
Bedroom 2	3.91m x 3.47m	12'10" x 11'5"
Total Area	78.3 sq m	843 sq ft

Block C - Cornhill House

APARTMENT 401

Kitchen/Living/Dining	7.90m x 4.60m	25'11" x 15'1"
Bedroom 1	4.77m x 3.99m	15'8" x 13'1"
Bedroom 2	3.91m x 3.47m	12'10" x 11'5"
Total Area	78.3 sq m	843 sq ft

APARTMENT 402

Kitchen/Living/Dining	7.86m x 3.68m	25'9" x 12'1"
Bedroom	3.76m x 3.55m	12'4" x 11'8"
Total Area	51.0 sq m	549 sq ft

APARTMENT 403

Kitchen/Living/Dining	7.86m x 3.68m	25'9" x 12'1"
Bedroom	3.76m x 3.55m	12'4" x 11'8"
Total Area	51.0 sq m	549 sq ft

APARTMENT 404

Kitchen/Living/Dining	7.40m x 5.17m	24'3" x 17'0"
Bedroom 1	5.50m x 3.15m	18'1" x 10'4"
Bedroom 2	4.20m x 3.21m	13'9" x 10'6"
Bedroom 3	4.20m x 2.17m	13'9" x 7'1"
Total Area	90.8 sq m	977 sq ft

Block D - Duesbury House

APARTMENT 401

Kitchen/Living/Dining	7.37m x 5.11m	24'2" x 16'9"
Bedroom 1	4.02m x 3.80m	13'2" x 12'6"
Bedroom 2	3.47m x 3.38m	11'5" x 11'1"
Bedroom 3	3.70m x 2.75m	12'2" x 9'0"
Total Area	99.1 sq m	1067 sq ft

APARTMENT 404

Kitchen/Living/Dining	7.90m x 4.60m	25'11" x 15'1"
Bedroom 1	4.77m x 3.99m	15'8" x 13'1"
Bedroom 2	3.91m x 3.47m	12'10" x 11'5"
Total Area	78.5 sq m	845 sq ft

Arrows denote where measurements have been taken from. S = Services.

We operate a policy of continuous improvement and individual features such as kitchen and bathroom layouts, doors, windows and elevational treatments may vary from time to time. Consequently these particulars should be treated as general guidance only and do not constitute a contract, part of a contract or a warranty. External finishes, landscaping and configuration may vary. Please refer to Sales Advisor for further details. All dimensions are approximate and should not be used for carpet sizes, appliance spaces or furniture. Furniture not to scale and all positions are indicative.

5TH FLOOR

5TH FLOOR



Block A - Porcelain House

APARTMENT 501

Kitchen/Living/Dining	7.90m x 4.60m	25'11" x 15'1"
Bedroom 1	4.77m x 3.99m	15'8" x 13'1"
Bedroom 2	3.91m x 3.47m	12'10" x 11'5"
Total Area	78.3 sq m	843 sq ft

APARTMENT 502

Kitchen/Living/Dining	7.86m x 3.68m	25'9" x 12'1"
Bedroom	3.76m x 3.55m	12'4" x 11'8"
Total Area	51.0 sq m	549 sq ft

APARTMENT 503

Kitchen/Living/Dining	7.86m x 3.68m	25'9" x 12'1"
Bedroom	3.76m x 3.55m	12'4" x 11'8"
Total Area	51.0 sq m	549 sq ft

APARTMENT 504

Kitchen	3.16m x 1.87m	10'4" x 6'2"
Living/Dining	4.43m x 3.51m	14'6" x 11'6"
Bedroom	4.17m x 2.89m	13'8" x 9'6"
Total Area	45.3 sq m	488 sq ft

APARTMENT 505

Kitchen/Living/Dining	5.78m x 4.34m	19'0" x 14'3"
Bedroom	3.48m x 3.41m	11'5" x 11'2"
Total Area	45.7 sq m	492 sq ft

Block B - Guest House

APARTMENT 501

Kitchen/Living/Dining	7.90m x 4.60m	25'11" x 15'1"
Bedroom 1	4.77m x 3.99m	15'8" x 13'1"
Bedroom 2	3.91m x 3.47m	12'10" x 11'5"
Total Area	78.3 sq m	843 sq ft

APARTMENT 502

Kitchen/Living/Dining	7.86m x 3.68m	25'9" x 12'1"
Bedroom	3.76m x 3.55m	12'4" x 11'8"
Total Area	51.0 sq m	549 sq ft

APARTMENT 503

Kitchen/Living/Dining	7.86m x 3.68m	25'9" x 12'1"
Bedroom	3.76m x 3.55m	12'4" x 11'8"
Total Area	51.0 sq m	549 sq ft

APARTMENT 504

Kitchen/Living/Dining	7.90m x 4.60m	25'11" x 15'1"
Bedroom 1	4.77m x 3.99m	15'8" x 13'1"
Bedroom 2	3.91m x 3.47m	12'10" x 11'5"
Total Area	78.3 sq m	843 sq ft

Block C - Cornhill House

APARTMENT 501

Kitchen/Living/Dining	7.90m x 4.60m	25'11" x 15'1"
Bedroom 1	4.77m x 3.99m	15'8" x 13'1"
Bedroom 2	3.91m x 3.47m	12'10" x 11'5"
Total Area	78.3 sq m	843 sq ft

APARTMENT 502

Kitchen/Living/Dining	7.86m x 3.68m	25'9" x 12'1"
Bedroom	3.76m x 3.55m	12'4" x 11'8"
Total Area	51.0 sq m	549 sq ft

APARTMENT 503

Kitchen/Living/Dining	7.86m x 3.68m	25'9" x 12'1"
Bedroom	3.76m x 3.55m	12'4" x 11'8"
Total Area	51.0 sq m	549 sq ft

APARTMENT 504

Kitchen/Living/Dining	7.40m x 5.17m	24'3" x 17'0"
Bedroom 1	5.50m x 3.15m	18'1" x 10'4"
Bedroom 2	4.20m x 3.21m	13'9" x 10'6"
Bedroom 3	4.20m x 2.17m	13'9" x 7'1"
Total Area	90.8 sq m	977 sq ft

Block D - Duesbury House

APARTMENT 501

Kitchen/Living/Dining	7.37m x 5.11m	24'2" x 16'9"
Bedroom 1	4.02m x 3.80m	13'2" x 12'6"
Bedroom 2	3.47m x 3.38m	11'5" x 11'1"
Bedroom 3	3.70m x 2.75m	12'2" x 9'0"
Total Area	99.1 sq m	1067 sq ft

APARTMENT 502

Kitchen/Living/Dining	7.86m x 3.68m	25'9" x 12'1"
Bedroom	3.76m x 3.55m	12'4" x 11'8"
Total Area	51.0 sq m	549 sq ft

APARTMENT 503

Kitchen/Living/Dining	7.86m x 3.68m	25'9" x 12'1"
Bedroom	3.76m x 3.55m	12'4" x 11'8"
Total Area	51.0 sq m	549 sq ft

APARTMENT 504

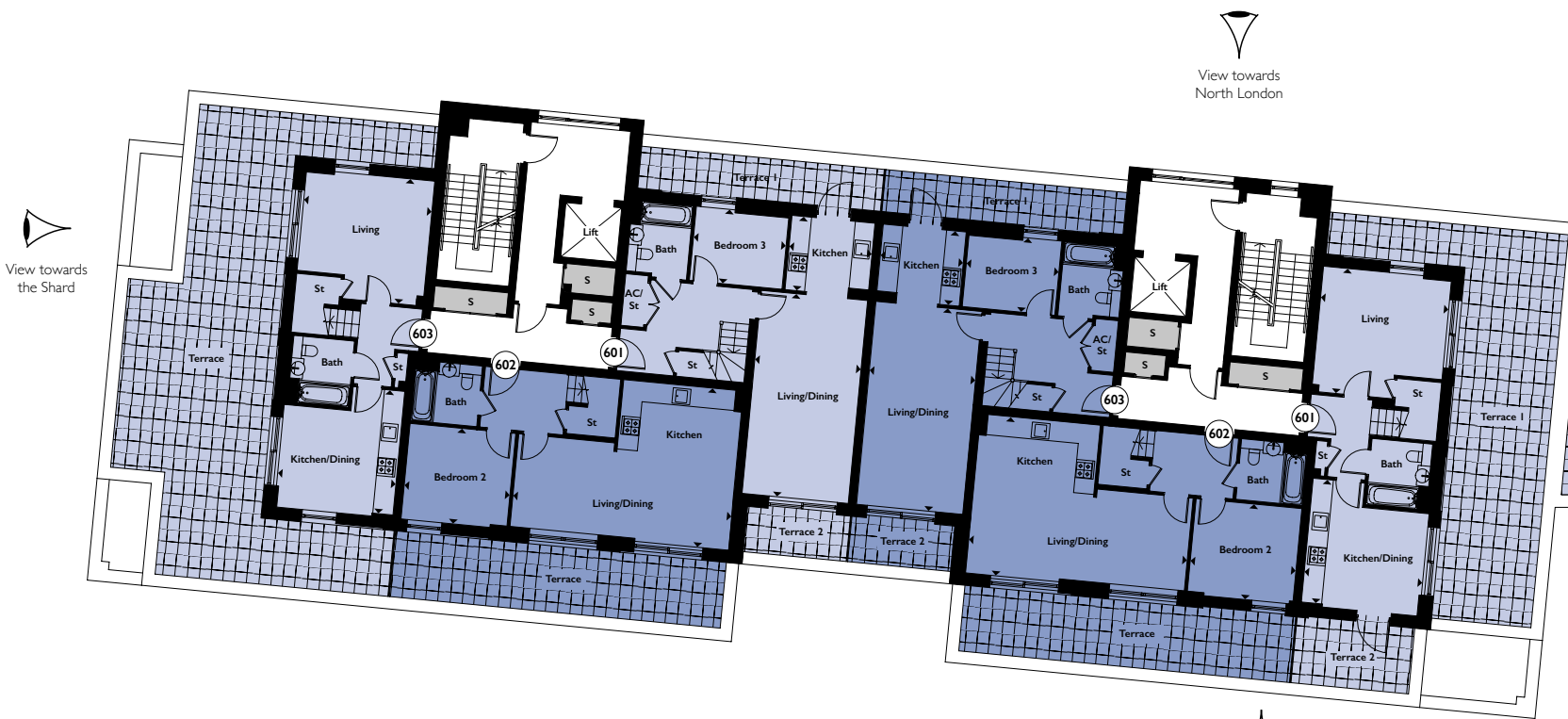
Kitchen/Living/Dining	7.90m x 4.60m	25'11" x 15'1"
Bedroom 1	4.77m x 3.99m	15'8" x 13'1"
Bedroom 2	3.91m x 3.47m	12'10" x 11'5"
Total Area	78.5 sq m	845 sq ft

Arrows denote where measurements have been taken from. S = Services.

We operate a policy of continuous improvement and individual features such as kitchen and bathroom layouts, doors, windows and elevational treatments may vary from time to time. Consequently these particulars should be treated as general guidance only and do not constitute a contract, part of a contract or a warranty. External finishes, landscaping and configuration may vary. Please refer to Sales Advisor for further details. All dimensions are approximate and should not be used for carpet sizes, appliance spaces or furniture. Furniture not to scale and all positions are indicative.

6TH FLOOR

6TH FLOOR



Block A - Porcelain House

APARTMENT 601  
DUAL LEVEL SKY VILLA

Kitchen	2.75m x 2.46m	9'0" x 8'1"
Living/Dining	6.73m x 3.51m	22'1" x 11'6"
Bedroom 3	3.07m x 2.36m	10'1" x 7'9"
Terrace 1	8.00m x 1.39m	26'3" x 4'7"
Terrace 2	3.41m x 1.50m	11'2" x 4'11"

APARTMENT 602  
DUAL LEVEL SKY VILLA

Kitchen/Living/Dining	7.23m x 5.27m	23'9" x 17'3"
Bedroom 2	3.50m x 3.17m	11'6" x 10'5"
Terrace	10.96m x 2.16m	35'11" x 7'1"

APARTMENT 603  
DUAL LEVEL SKY VILLA

Kitchen/Dining	4.20m x 3.92m	13'9" x 12'10"
Living	4.23m x 4.14m	13'11" x 13'7"
Terrace	15.59m x 5.10m	51'2" x 16'9"

Block B - Guest House

APARTMENT 601  
DUAL LEVEL SKY VILLA

Kitchen/Dining	4.20m x 3.92m	13'9" x 12'10"
Living	4.23m x 4.14m	13'11" x 13'7"
Terrace 1	12.72m x 3.27m	41'9" x 10'9"
Terrace 2	3.88m x 2.16m	12'9" x 7'1"

APARTMENT 602  
DUAL LEVEL SKY VILLA

Kitchen/Living/Dining	7.23m x 5.27m	23'9" x 17'3"
Bedroom 2	3.50m x 3.17m	11'6" x 10'5"
Terrace	10.96m x 2.16m	35'11" x 7'1"

APARTMENT 603  
DUAL LEVEL SKY VILLA

Kitchen	2.75m x 2.46m	9'0" x 8'1"
Living/Dining	6.73m x 3.51m	22'1" x 11'6"
Bedroom 3	3.07m x 2.36m	10'1" x 7'9"
Terrace 1	8.00m x 1.39m	26'3" x 4'7"
Terrace 2	3.41m x 1.50m	11'2" x 4'11"



Block C - Cornhill House

APARTMENT 601  
DUAL LEVEL SKY VILLA

Kitchen	2.75m x 2.46m	9'0" x 8'1"
Living/Dining	6.73m x 3.51m	22'1" x 11'6"
Bedroom 3	3.07m x 2.36m	10'1" x 7'9"
Terrace 1	8.00m x 1.39m	26'3" x 4'7"
Terrace 2	3.41m x 1.50m	11'2" x 4'11"

APARTMENT 602  
DUAL LEVEL SKY VILLA

Kitchen/Living/Dining	7.23m x 5.27m	23'9" x 17'3"
Bedroom 2	3.50m x 3.17m	11'6" x 10'5"
Terrace	10.96m x 2.16m	35'11" x 7'1"

APARTMENT 603  
DUAL LEVEL SKY VILLA

Kitchen/Dining	4.20m x 3.92m	13'9" x 12'10"
Living	4.23m x 4.14m	13'11" x 13'7"
Terrace 1	12.72m x 4.88m	41'9" x 16'0"
Terrace 2	3.88m x 2.16m	12'9" x 7'1"

Block D - Duesbury House

APARTMENT 601  
DUAL LEVEL SKY VILLA

Kitchen/Dining	4.20m x 3.92m	13'9" x 12'10"
Living	4.14m x 4.05m	13'7" x 13'3"
Terrace 1	13.39m x 5.74m	43'11" x 18'10"
Terrace 2	3.88m x 2.16m	12'9" x 7'1"

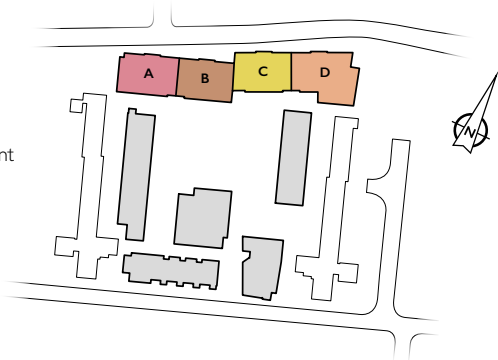
APARTMENT 602  
DUAL LEVEL SKY VILLA

Kitchen/Living/Dining	7.23m x 5.27m	23'9" x 17'3"
Bedroom 2	3.50m x 3.17m	11'6" x 10'5"
Terrace	10.96m x 2.16m	35'11" x 7'1"

APARTMENT 603  
DUAL LEVEL SKY VILLA

Kitchen	2.75m x 2.46m	9'0" x 8'1"
Living/Dining	6.73m x 3.51m	22'1" x 11'6"
Bedroom 3	3.07m x 2.36m	10'1" x 7'9"
Terrace 1	8.00m x 1.39m	26'3" x 4'7"
Terrace 2	3.41m x 1.50m	11'2" x 4'11"

- Key:
- Two Bedroom Sky Villa Apartment
  - Three Bedroom Sky Villa Apartment



Arrows denote where measurements have been taken from. S = Services.

We operate a policy of continuous improvement and individual features such as kitchen and bathroom layouts, doors, windows and elevational treatments may vary from time to time. Consequently these particulars should be treated as general guidance only and do not constitute a contract, part of a contract or a warranty. External finishes, landscaping and configuration may vary. Please refer to Sales Advisor for further details. All dimensions are approximate and should not be used for carpet sizes, appliance spaces or furniture. Furniture not to scale and all positions are indicative.

7TH FLOOR

7TH FLOOR



Block A - Porcelain House

APARTMENT 601  
DUAL LEVEL SKY VILLA

Bedroom 1	5.45m x 3.91m	17'11" x 12'10"
Bedroom 2	4.22m x 3.54m	13'10" x 11'7"
Terrace 3	9.33m x 3.38m	30'7" x 11'1"
Total Area	103.6 sq m	1115 sq ft

APARTMENT 602  
DUAL LEVEL SKY VILLA

Bedroom 1	3.73m x 3.41m	12'3" x 11'2"
Bedroom 3	3.24m x 3.23m	10'8" x 10'7"
Total Area	92.9 sq m	1000 sq ft

APARTMENT 603  
DUAL LEVEL SKY VILLA

Bedroom 1	5.70m x 3.92m	18'8" x 12'10"
Bedroom 2	4.35m x 3.35m	14'3" x 11'0"
Total Area	91.6 sq m	986 sq ft

Block B - Guest House

APARTMENT 601  
DUAL LEVEL SKY VILLA

Bedroom 1	5.70m x 3.92m	18'8" x 12'10"
Bedroom 2	4.23m x 3.35m	13'11" x 11'0"
Total Area	91.6 sq m	986 sq ft

APARTMENT 602  
DUAL LEVEL SKY VILLA

Bedroom 1	3.73m x 3.39m	12'3" x 11'1"
Bedroom 3	3.24m x 3.23m	10'8" x 10'7"
Total Area	92.1 sq m	991 sq ft

APARTMENT 603  
DUAL LEVEL SKY VILLA

Bedroom 1	5.45m x 3.91m	17'11" x 12'10"
Bedroom 2	4.23m x 3.54m	13'11" x 11'7"
Terrace 3	9.33m x 3.38m	30'7" x 11'1"
Total Area	103.6 sq m	1115 sq ft

Block C - Cornhill House

APARTMENT 601  
DUAL LEVEL SKY VILLA

Bedroom 1	5.45m x 3.91m	17'11" x 12'10"
Bedroom 2	4.30m x 3.54m	14'1" x 11'7"
Terrace 3	9.33m x 3.38m	30'7" x 11'1"
Total Area	103.6 sq m	1115 sq ft

APARTMENT 602  
DUAL LEVEL SKY VILLA

Bedroom 1	3.73m x 3.41m	12'3" x 11'2"
Bedroom 3	3.24m x 3.23m	10'8" x 10'7"
Total Area	92.4 sq m	995 sq ft

APARTMENT 603  
DUAL LEVEL SKY VILLA

Bedroom 1	5.70m x 3.92m	18'8" x 12'10"
Bedroom 2	4.23m x 3.35m	13'11" x 11'0"
Total Area	91.6 sq m	986 sq ft

Block D - Duesbury House

APARTMENT 601  
DUAL LEVEL SKY VILLA

Bedroom 1	5.70m x 3.92m	18'8" x 12'10"
Bedroom 2	4.05m x 3.35m	13'3" x 11'0"
Total Area	88.6 sq m	954 sq ft

APARTMENT 602  
DUAL LEVEL SKY VILLA

Bedroom 1	3.73m x 3.39m	12'3" x 11'1"
Bedroom 3	3.24m x 3.23m	10'8" x 10'7"
Total Area	92.1 sq m	991 sq ft

APARTMENT 603  
DUAL LEVEL SKY VILLA

Bedroom 1	5.45m x 3.91m	17'11" x 12'10"
Bedroom 2	4.43m x 3.54m	14'6" x 11'7"
Terrace 3	9.33m x 3.38m	30'7" x 11'1"
Total Area	103.6 sq m	1115 sq ft

Arrows denote where measurements have been taken from. S = Services.

We operate a policy of continuous improvement and individual features such as kitchen and bathroom layouts, doors, windows and elevational treatments may vary from time to time. Consequently these particulars should be treated as general guidance only and do not constitute a contract, part of a contract or a warranty. External finishes, landscaping and configuration may vary. Please refer to Sales Advisor for further details. All dimensions are approximate and should not be used for carpet sizes, appliance spaces or furniture. Furniture not to scale and all positions are indicative.



# STEP INSIDE

Computer generated image of a typical living room at Bow Garden Square.



*Contemporary design and lots of natural light set the scene for truly modern London living.*

Computer generated image of a typical bedroom at Bow Garden Square.

Each stylish home makes the very best of space, with thoughtfully designed units and appliances, high windows and plenty of scope for you to express your personality by matching furniture and fabrics to each room. Many of the apartments have excellent views across London, meaning you could wake up each day to a beautiful cityscape. High ceilings emphasise the spaciousness of each room, allowing you to create truly attractive living spaces.



Computer generated images of a typical kitchen, bathroom and ensuite at Bow Garden Square.

# DESIGNED FOR LIVING

*Premium fixtures and fittings for ultimate luxury*



### KITCHENS

- A range of contemporary fitted units from London designer Urban Myth
- Stone work surfaces
- Glass splashbacks
- Feature lighting under wall units
- Fully integrated Smeg appliances: stainless steel oven, ceramic hob, dishwasher, fridge/freezer, washer/dryer and microwave
- Stainless steel extractor hood

### BATH & ENSUITE SHOWER ROOMS

- Pure white bathroom unit with chrome taps and mixers
- Bath with thermostatic mixer shower and glazed screen
- Bespoke cabinetry with built in storage and low voltage socket
- Walk-in shower enclosure in ensuite
- Contemporary ceramic and porcelain tiling
- Heated towel rails

### DECOR

- Smooth finish to all walls & ceilings painted in subtle white emulsion
- White satinwood finish to doors and woodwork

### FIXTURES & FITTINGS

- Wardrobe to main bedroom with sliding, mirror doors
- Satin chrome door handles
- Recessed downlights to kitchen and bathrooms
- Sky+, TV and telephone outlets to living room, with TV outlets to all bedrooms

### GENERAL FEATURES

- Outside space to all apartments
- Communal bicycle storage
- Underfloor heating

### FLOORING

- Kitchen, living room and hallway flooring in premium quality woodstrip laminate
- Contemporary ceramic tiling in bathroom and ensuite shower rooms
- Bedroom carpeted in warm, neutral colour tone

### SECURITY & WARRANTIES

- Video entryphone system to all apartments
- Looped recorded CCTV system to communal areas
- 10 year NHBC warranty
- Two year Telford Homes 24/7 emergency cover
- Comprehensive induction with designated Telford Homes Customer Service Manager

Specification details are correct at time of going to print but are for guidance only and remain subject to change. Exact fittings and finishes are subject to availability at time of installation.

# 100%

OF CUSTOMERS SURVEYED  
WOULD RECOMMEND US

## *Unrivalled customer service*

**THE TELFORD HOMES BRAND DELIVERS HIGH QUALITY, HIGHLY DESIRABLE NEW HOMES THAT ARE SUPPORTED BY FIRST-CLASS CUSTOMER SERVICE.**

Telford Homes Plc is a leading London-focused residential property developer. The company specialises in creating, designing and building innovative landmark developments in some of the most desirable and sought after locations in the capital. The emphasis of a Telford Homes project is always focused foremost upon quality, luxury and exclusivity. A high specification, combined with some of the finest designer names, ensures that each individual property meets or exceeds the most demanding expectations. Architectural innovation and excellence ensures a true landmark development, while a fresh and imaginative approach to communal areas further ensures a truly luxurious lifestyle experience. That is why 100% of customers surveyed in 2017\* would recommend Telford Homes to their friends and family.

*A development by:*



Tel: +44 (0)1992 809800

[www.telfordhomes.london](http://www.telfordhomes.london)

Telford Homes Plc  
Telford House, Queensgate, Britannia Road, Waltham Cross, Herts EN8 7TF.



These particulars are for illustration only. We operate a policy of continuous improvement and individual features such as kitchen and bathroom layouts, doors, windows and elevational treatments may vary from time to time. Specification details are for guide purposes only and remain subject to change without prior notice. Should a replacement be required this will be to an equal or higher standard. Consequently these particulars should be treated as general guidance only and cannot be relied upon as accurately describing any of the Specified Matters prescribed by any order made under the Property Misdescriptions Act 1991. Nor do they constitute a contract, part of a contract or a warranty. Bow Garden Square is a marketing name and may not form part of the final postal address. Computer generated images are indicative only and may be subject to change. Details correct at time of going to print E and OE. \*This survey is carried out by in-house research, an independent market research company who interview our buyers six weeks after legal completion.





*A development by Telford Homes Plc*

*[www.telfordhomes.london](http://www.telfordhomes.london)*